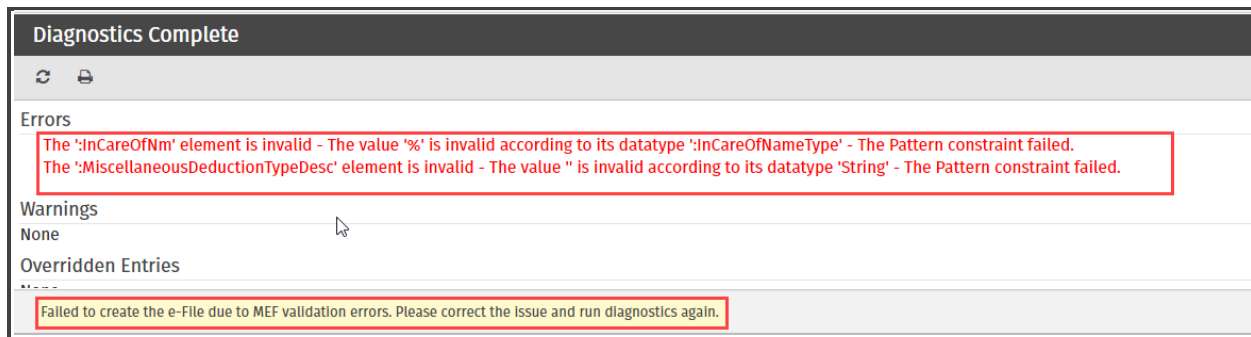


Understanding Validation Errors

As you check a return for errors, TaxWise Online runs an additional check on the return to verify the correct *schema*, or e-file format. If there is an error with the schema, TaxWise Online displays the validation error(s) along with a message stating that we *Failed to create the e-file due to MEF Validation errors*.



Things to know about validation errors:

- The error may sometimes begin with what appears to be a web address such as <https://www.irs.gov/efile> if the error is on a federal form. You could see state web address on validation errors associated with state forms. For example, a California state validation error may start with <http://ftb.ca.gov/efile>.
- 'Element' – means the field on that particular form
- 'The Value' – means the entry that you typed in that field or that calculated into that field.

Example 1 : '<http://www.irs.gov/efile:OtherExpenseDescription>' element is invalid - "The value" is invalid according to its datatype '<http://www.irs.gov/efile:ShortDescriptionType>' - The Pattern constraint failed.

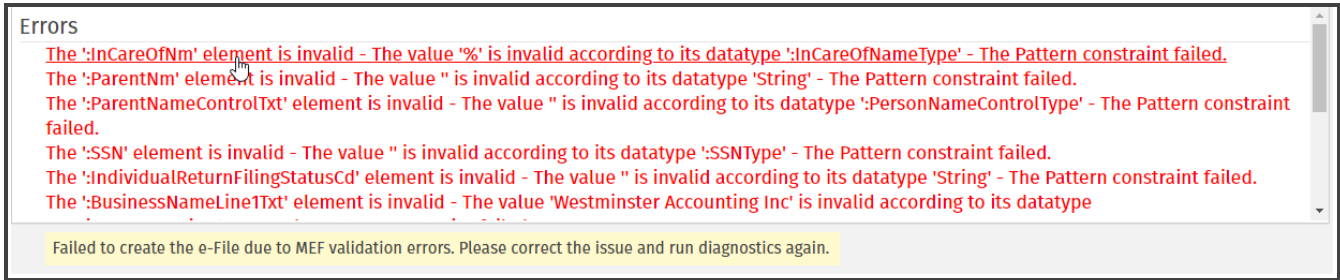
- This section of the error, '[OtherExpenseDescription](http://www.irs.gov/efile:OtherExpenseDescription)', refers to the field of the form that contains the invalid entry.
- 'The value' section of the error refers to the text typed into that particular field.

In some instances when you hover over the validation error, an underline displays, indicating that the error is linked to the page with the error. Click the link to jump to the field so you can fix the error. It is when the return is not linked that it can be a little harder to locate.

Common Causes of Validation Errors include:

- **Punctuation:** Stray periods, hyphens, quotes or special characters in a field, or extra spaces between words.
- **Descriptions:** Make sure to enter descriptions in fields where applicable. Leaving a description blank, will likely cause a validation error.
- **Check Boxes:** Do not check boxes that are not required for that return.

Review the following examples:



Example2: The ':InCareOfNm' element is invalid - The value '%' is invalid according to its datatype ':InCareOfNameType' - The Pattern constraint failed.

In this example, the element or field name code where the error has occurred is the InCareofNm or In Care of Name field. The value indicates what was typed in that field, in this case, the % sign. In this instance, the error is linked, so when you click on the error it takes you directly to 1040 Page 1, where we have entered % sign in the In care of field.

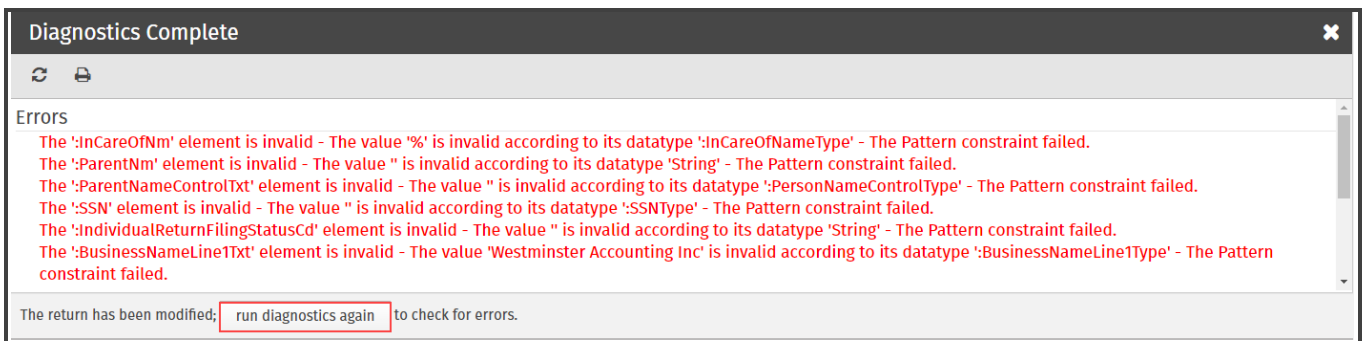
Example 3: The ':ParentNm' element is invalid - The value " is invalid according to its datatype 'String' - The Pattern constraint failed.

In this example, the element is 'ParentNm' and the value is the single quotes with no data. In this instance the error is not linked. In this case, there is an entry on a form that requires the parents name and it is blank. Look through the forms and locate the missing element.

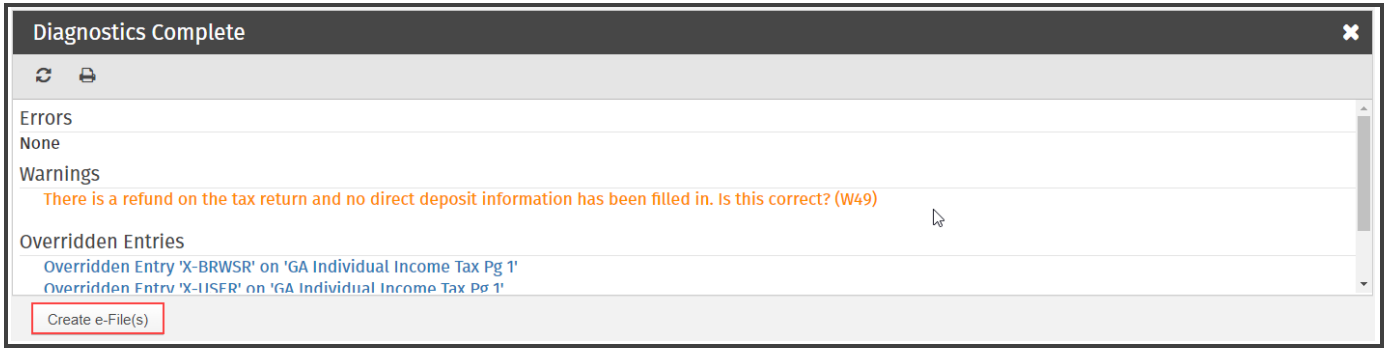
To correct the validation error:

Use the information provided in the element and value part of the error to help locate and correct the error. If an error is linked, click on the red validation error, which will take you to the form in the return that is causing the error.

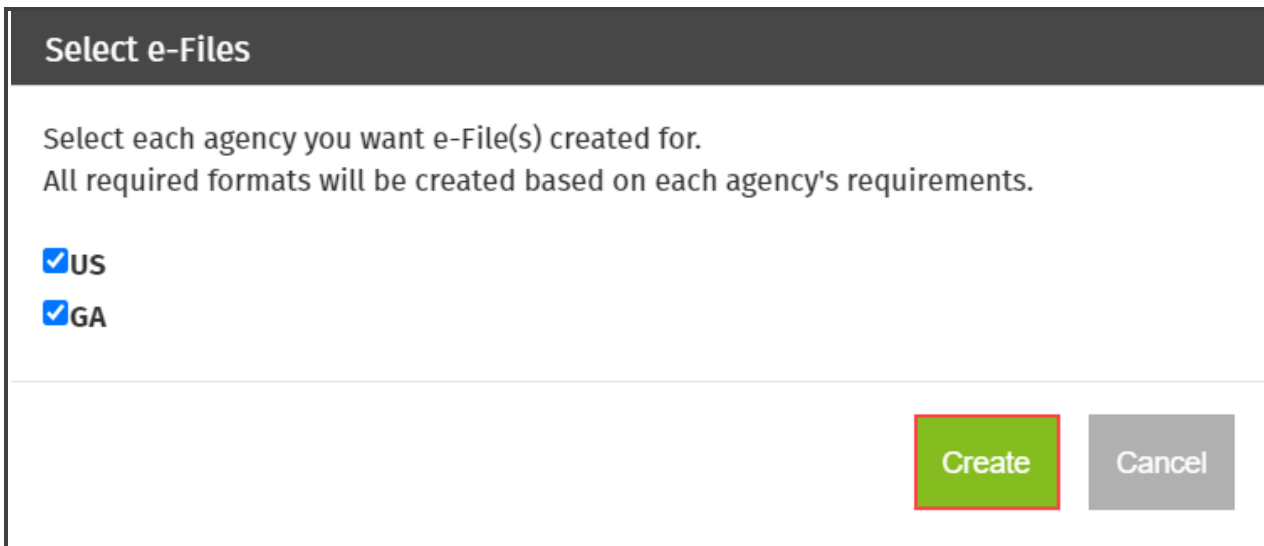
1. Once the error is located and corrected, the Diagnostic pane displays a message that the return has been modified. Click **run diagnostics again** to recheck for errors.



2. TaxWise Online refreshes the Diagnostics pane. Click **Create e-Files** to create the e-file.



3. TaxWise Online displays the Select e-Files dialog box. Select each agency for which you want e-File(s). Click **Create**.



4. If TaxWise Online does not find any validation errors, the system displays a message stating the **e-files created successfully**. Click the **X** to exit the Diagnostic pane.

