



CCH

a Wolters Kluwer business

ProSystem *fx*[®] Engagement Field Guide

July 2012

Copyright 2012 CCH INCORPORATED. A Wolters Kluwer business. All Rights Reserved. Material in this publication may not be reproduced or transmitted, in any form or by any means, without prior written permission. Requests for that permission should be directed to:

CCH INCORPORATED
20101 Hamilton Ave.
Suite 200
Torrance, CA 90502

The contents of this publication are believed to be accurate. However, responsibility cannot be assumed for the information contained herein, and the consequences resulting from the use thereof. Material in this publication is subject to change without notice.

This User Manual and the computer software it describes are designed to provide accurate and authoritative information in regard to the subject matter covered. They are distributed with the understanding that the publisher is not engaged in rendering legal, accounting, or other professional services. If legal advice or other expert assistance is required, the services of a competent professional should be sought.

"ProSystem *fx* Engagement" is a registered trademark of CCH INCORPORATED.

"Windows" is a registered trademark of Microsoft Corporation.

All other brand, product, or company names are trademarks or registered trademarks of their respective owners.

Printed in U.S.A.

Table of Contents

Overview	6
Local File Room	7
Client Index View	7
Engagement Today View	8
Binder Window	9
Binder View	9
Notes Summary View	12
Sign Off Summary View	13
Current Editor View (or Live Editor View)	14
Engagement Toolbar - File Room	15
Engagement Toolbar - Binder Window	17
Engagement Toolbars in Excel and Word	20
Engagement with the Microsoft Office Ribbon	20
Engagement Toolbar - Excel	20
Engagement Toolbar - Word	22
Adding Items - File Room	24
New Client Folder	24
New Binder	24
Adding Items - Binder Window	26
New Tab	26
New Workpaper	26

Understanding the Trial Balance	30
Opening a Trial Balance	30
Parts of a Trial Balance	31
Using Trial Balance Functions	33
Setting Up Trial Balance Views	33
Converting and Importing Trial Balance Data	33
Chart of Accounts	42
TB Edit Mode	43
Account Groupings	43
Journal Entries	44
Recording Transactions in Write Up Trial Balances	45
Reports	46
Linking to the Trial Balance	50
Linking Trial Balance Data	50
Analyzing a TB Link Formula	52
Drill Down to Trial Balance Accounts	53
Advanced Trial Balance Functions	53
Exporting to Tax Software	55
Sharing Workpapers	57
Shared File Rooms	57
Synchronize Binder	59
Synchronize Individual Workpapers	60
Express Synchronization	60
Binder Packages	61

Reviewing Workpapers	63
Workpaper Notes	63
Creating a Workpaper or Workpaper Tab Note	63
Responding to, Clearing, or Deleting a Note	63
Workpaper Sign Off	64
Lock/Unlock Workpapers	64
Freeze/Unfreeze Workpapers	65
Tickmarks	65
Workpaper Reference Links	67
Publishing Workpapers	67
Other Common Features	69
Creating Templates	69
Saving TB Link Formulas	71
Renaming Items	72
Deleting Items	72
Getting More Information	73
Contacting ProSystem fx Engagement	73
Appendix	74
Notes	76

Overview

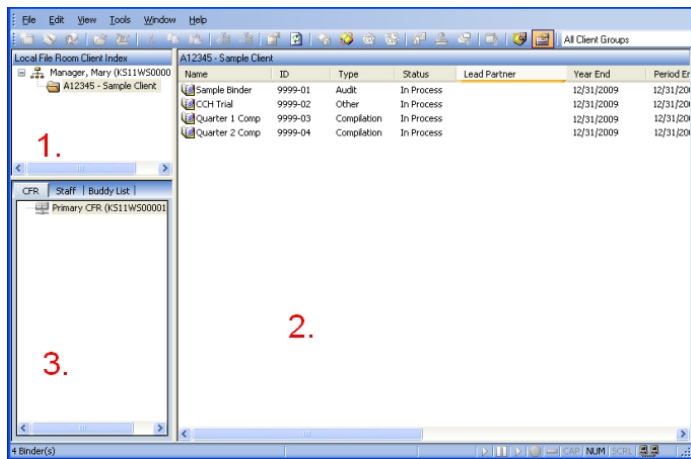
The Field Guide is designed to be used as a quick reference for experienced users of ProSystem fx[®] Engagement. This Field Guide is ideal to use as a supplement to our training courses. It describes the most common way to perform tasks.

Refer to the *ProSystem fx Engagement User Guide* for a more comprehensive explanation of these functions and all of the ways to perform them. You can access the User Guide from the Help Menu in ProSystem fx Engagement.

Local File Room

There are two views for the local file room: Client Index view and Engagement Today view.

Client Index View



1. Client Index Pane. This area of the File Room displays client folder information. The Client Folders hold your Engagement binders.

2. Contents Pane. This area displays the contents of the selected item in the *Client Index Pane*. These could be client folders or binders. You can sort items shown in this pane by clicking the column headers.

3. Remote File Rooms Pane. This area contains three tabs:

- **CFR (Central File Room).** Lists all CFRs set up for the firm. If you have logged in from the Field, you will not see the *CFR* tab.
- **Staff.** Lists all staff members.
- **Buddy List.** Lists the staff members you have added to your Buddy List.

Engagement Today View

Engagement Today displays user-level diagnostic information that summarizes key statistics regarding the binders in your local file room. Engagement Today also displays the Tip of the Day.



Note: Engagement Today is not available from a shared file room.

The Engagement Today view displays five panes:

- 1. My Recent Binders.** Displays links to the last four binders used.
- 2. By Lead Partner.** Displays a list of binder links sorted by lead partner from the binder properties.
- 3. Other Highlights.** Displays a list of binder links sorted by specific criteria.
- 4. By Engagement Type.** Displays a list of binder links sorted by the categories listed.
- 5. Tip of the Day.** Displays suggestions for using the program more efficiently. You can hide the Tip of the Day by clicking **Hide Tips**. Click **Previous** and **Next** to navigate through the tips.

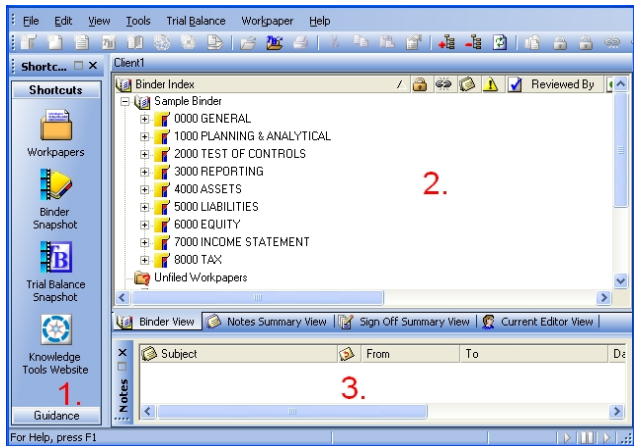
Binder Window

To open a binder, double-click the binder in the file room. The *Binder* window is made up of four views:

- Binder View
- Notes Summary View
- Sign Off Summary View
- Current Editor View (or Live Editor View)

Binder View


The Binder View displays the contents of the binder and the status of the workpapers in the binder.



1. Shortcut Bar. The Shortcut Bar provides quick access to many Engagement functions, including workpapers, the Binder Snapshot, and the Trial Balance Snapshot. It also includes links to ProSystem fx Tax (if installed), IntelliConnect, Accounting Research Manager, the CCH Tax Research Network, and FAQs, among other links.

2. Binder Index Pane. The Binder Index Pane includes the following folders:


Binder. The Binder name displays beside one of the following images, based on the Document Completion Date:


 The Document Completion Date is not approaching and is not past due.


 The Document Completion Date is approaching.


 The Document Completion Date is past due.


Note: If you are Current Editor of a binder, a current editor designation arrow displays on top of the appropriate binder icon above.

 **Unfiled Workpapers.** This folder stores workpapers that have not been filed yet. Reports generated by ProSystem fx Engagement originally appear here. You can then move each report to the desired workpaper tab section.

 **Conflicts.** This folder stores workpapers in conflict after synchronization or from binder packages that have been received.

 **Incompatible Workpapers.** This folder displays if you have Knowledge Coach installed. It stores Knowledge Coach workpapers that could not be filed in the active binder because the title version of the workpaper is not compatible with the title version of the binder.

 **Published Workpapers.** This folder stores copies of Word or Excel workpapers where the formulas (such as, trial balance links) have been automatically converted to values.

 **Trash.** This folder contains the workpapers you delete in ProSystem fx Engagement. If you have deleted a workpaper by mistake, you can restore it and it will be filed back to the appropriate tab.

The Binder folder contains tabs that organize the workpapers. Workpaper properties display in columns to the right of the *Binder Index* column and include the following:

Index Number and Name. The alphanumerical index number is optional. The name is required, and it describes the content of the workpaper.



Locked. A locked paper is read-only.



Frozen Links. If the Engagement links in the selected workpaper are frozen, this icon displays.



Note. If a note has been created for this workpaper or workpaper tab, this icon displays.



Modified after Reviewer Sign Off. If the administrator has chosen to flag workpapers that have been modified after a reviewer has signed off, this icon displays as appropriate.



Prepared By. When a workpaper is signed off by a preparer, the date and preparer's initials display.



Reviewed By. When a workpaper is signed off by a reviewer, the date and reviewer's initials display.



2nd Reviewed By. When a workpaper is signed off by a second reviewer, the date and reviewer's initials display.


File Modified Date. The date and time the workpaper was last changed.




Current Editor (if viewing a non-shared file room). The staff member who has checked out this workpaper.

Live Editor (if viewing a shared file room). The staff member who has this workpaper open. If no staff member has the workpaper open, then <Available> displays if the file room's host is current editor of the workpaper. <Unavailable> displays if the host is not the current editor.






 **Assigned To.** The team member who the current editor has assigned the workpaper to prior to synchronizing. (Does not display in shared file rooms.)

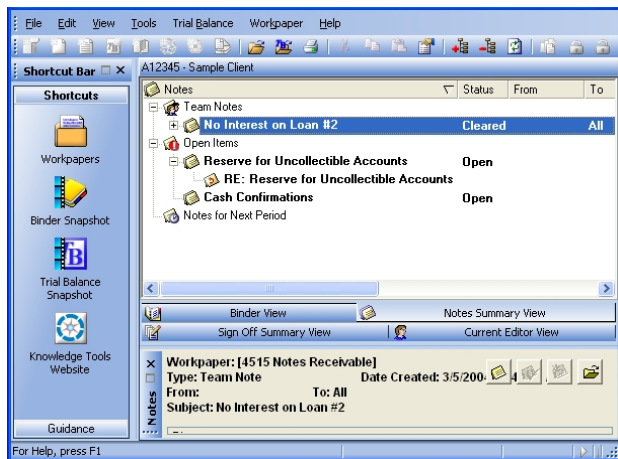
3. Notes Pane. When a workpaper or tab with a note is selected in the *Binder* window, information about the following displays: subject, number of responses, who it is from and assigned to, the date created, who cleared the note, and the date cleared.

 **Note:** If Knowledge Coach is installed, a Diagnostic pane also displays above the Notes pane.

Notes Summary View

The Notes Summary View displays all of the notes that exist in the binder. The Notes are broken down into three types:

-  Team Notes
-  Open Items
-  Notes for Next Period



The screenshot shows the 'Notes Summary View' of a software application. The window title is 'A12345 - Sample Client'. The main pane displays a tree view of notes:

- Team Notes
 - No Interest on Loan #2 (Cleared, All)
- Open Items
 - Reserve for Uncollectible Accounts (Open)
 - RE: Reserve for Uncollectible Accounts (Open)
 - Cash Confirmations (Open)
- Notes for Next Period




At the bottom, a pane shows details for a selected note:

- Workpaper: [4515 Notes Receivable]
- Type: Team Note
- Date Created: 3/5/200...
- From: To: All
- Subject: No Interest on Loan #2

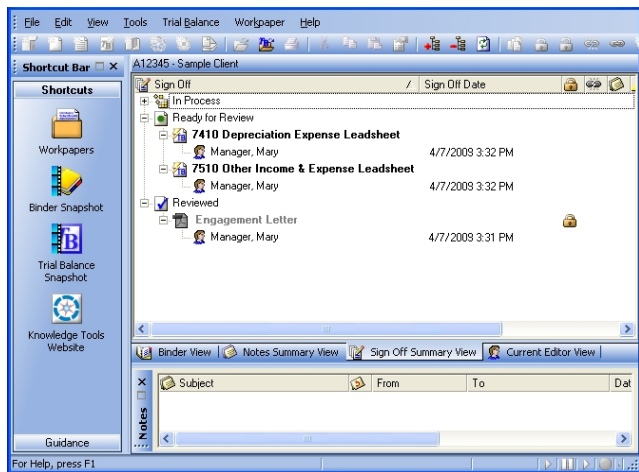
Sign Off Summary View

The Sign Off Summary View displays the level of review for all of the workpapers that exist in the binder.

The level of review is broken down into three stages:

-  In Process
-  Ready for Review
-  Reviewed

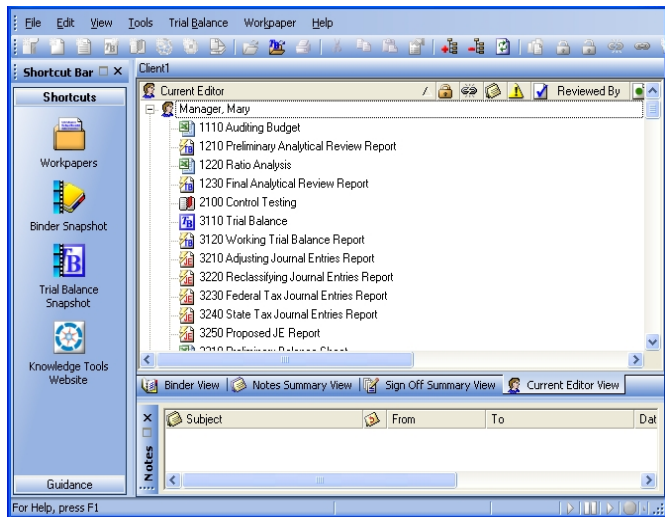
Team members that have signed workpapers off are listed, with the sign off date, under each workpaper.



Current Editor View (or Live Editor View)

If you are viewing a non-shared local file room, the *Current Editor View* tab is available. The Current Editor View displays all of the team members assigned to the binder. Displayed under each team member is a list of the workpapers they have checked out. Any workpaper not checked out to a team member appears in the *Unassigned* section.

If you are viewing a shared local file room, the *Live Editor View* tab is available. The Live Editor View displays all the staff members who are currently working on a workpaper in the binder. Under each staff member is a list of the workpapers he or she is working on. Any workpapers that are not being worked on are listed in the *Unassigned* section.



Engagement Toolbar - File Room

The Engagement toolbar in the *File Room* window consists of the following buttons:



New Client. Creates a new client folder.



New Binder Wizard. Creates a new binder.

Assign Binder Staff. Adds team members to a binder.



Open. Opens the selected item.



Open Trial Balance. Opens the trial balance in a selected binder. If there is more than one trial balance, a list appears for you to select from.



Cut. Cuts item(s) to the clipboard.



Copy. Copies item(s) to the clipboard.



Paste. Pastes item(s) from the clipboard.



Expand All. Expands the entire tree.



Collapse All. Collapses the entire tree.



Properties. Displays properties of the selected item.



Refresh. Refreshes the local file room or central file room.



Create Binder Package. Creates a single file (compressed) of a binder to send to other Engagement users.



Receive Binder Package. Receives a binder package created by another Engagement team member.



Synchronize Binder. Opens the *Synchronize Binder Wizard*.



Express Synchronization. Automatically synchronizes the binder to the central file room without opening the *Synchronize Binder Wizard*.



Tax Software Interface. Exports trial balance data to tax vendors.



Finalize Binder. Opens the *Finalize Binder Wizard* for the selected binder.



Roll Forward. Opens the *Roll Forward Wizard* for the selected binder.



Client Inquiry. Opens the ProSystem *fx Practice Client Inquiry Module*.



Engagement Today. Displays the Engagement Today view.



Client Index. Displays the Client Index view.

All Client Groups ▾

Client Group Filter. Filters the clients in the file room by client group.

Engagement Toolbar - Binder Window

The Engagement toolbar displayed in the *Binder* window consists of the following buttons:



New Tab. Creates a new workpaper tab.



New Workpaper from Template. Creates a new workpaper from predefined templates.



New Workpaper from File. Inserts into the binder a new workpaper from an Excel, Word, or other file type.



New Trial Balance. Creates a new trial balance.



New Manual Workpaper. Creates a workpaper to serve as a placeholder for a physical workpaper not inserted into the Binder.
















New Placeholder. Creates a name and index number for a workpaper that will be added at a later date from a file or scanned document.



New Knowledge Tools Workpaper. Creates a new workpaper from the Knowledge Tools Workpaper Templates. Requires installation of Knowledge Tools titles.



New Knowledge Coach Workpaper. Creates a new workpaper from the Knowledge Coach Workpaper Templates. Requires installation of Knowledge Coach titles.

-  **New CCH Workpaper.** Creates a new workpaper from the CCH Workpaper Templates.
-  **New Workpaper from Scanner.** Creates a new workpaper from a TWAIN-compliant scanner.
-  **Open.** Opens the selected item.
-  **Open Trial Balance.** Opens the trial balance. If there is more than one trial balance, a list appears for you to select from.
-  **Print.** Prints the selected workpaper or report.
-  **Cut.** Cuts item(s) to the clipboard.
-  **Copy.** Copies item(s) to the clipboard.
-  **Paste.** Pastes item(s) from the clipboard.
-  **Properties.** Displays properties of the selected item.
-  **Expand All.** Expands Binder Views to show all workpapers.
-  **Collapse All.** Collapses Binder Views to hide all workpapers.
-  **Refresh.** Refreshes and re-sorts Binder tabs and workpapers.
-  **Publish Workpaper.** Publishes a workpaper to convert formulas to values.



Lock Workpaper. Locks a workpaper as read-only.



Unlock Workpaper. Unlocks a workpaper.



Freeze Links. Freezes Engagement links in the selected workpaper so that links are not refreshed.



Unfreeze Links. Unfreezes Engagement links for the selected workpaper.



Create Workpaper Note. Creates a note for the selected workpaper.



Sign Off Workpaper. Signs off the selected workpaper.



Tax Software Interface. Exports data to tax packages.



Binder View. Displays binder contents and workpaper status.



Notes Summary View. Displays workpaper and workpaper tab notes by type.



Sign Off Summary View. Displays workpapers sorted by level of review.



Current Editor View/Live Editor View. Displays workpapers sorted by current editor or live editor.

Engagement Toolbars in Excel and Word

Engagement with the Microsoft Office Ribbon

Engagement takes advantage of the Ribbon interface in Excel and Word. The *Engagement* tab displays all of the functions you need to complete workpaper tasks. The Workflow group of the *Engagement* tab includes the six most recently used tickmarks.

Engagement Toolbar - Excel

The Microsoft Excel toolbar consists of the following buttons:

Name Functions ▾ **Name Functions.** Inserts links to Client, Engagement, and Firm information.

Date Functions ▾ **Date Functions.** Inserts links to Current and Prior date information.



Refresh. Refreshes all links in the workpaper, including Name, Date, and Trial Balance Links.



Copy TB Link. Links data from your trial balance to your workpapers or financials. This information updates with trial balance changes.



Paste TB Link. Links data from your trial balance to your workpapers or financials. This information updates with trial balance changes.
















Insert TB Link. Creates a link from the trial balance without opening the trial balance.



Drill Down TB Link. Drills down to the accounts included in the linked formula.



Create TB Report. Creates reports based on your trial balance data. See Appendix on page 74 for sample report settings.

-  **JE Summary.** Displays current journal entries by type. You can add, modify, or delete journal entries from this window.
-  **Account Groupings.** Opens the *Account Groupings* window.
-  **TB Column Setup.** Opens the *TB Column Setup* window where you can modify the columns displayed in the trial balance.
-  **Paste TB Import.** Imports data directly from Excel into the trial balance.
-  **TB Edit Mode.** When toggled on, allows you to make changes to the trial balance directly.
-  **Write Up Journal Entry.** Organizes the transaction data in journals.
-  **Consolidate.** Consolidates data from single company trial balances into a consolidated trial balance.
-  **Tickmark Toolbar.** Displays the tickmark toolbar.
-  **Insert Workpaper Reference.** Inserts a reference link to another workpaper in the binder.
-  **Open Workpaper Reference.** Opens the referenced workpaper.
-  **Freeze Links.** Freezes Engagement links for the workpaper so that links are not refreshed.
-  **Unfreeze Links.** Unfreezes Engagement links for the workpaper.
-  **Create Workpaper Note.** Creates a note for the workpaper.



QuikLink. Performs a Quiklink with ProSystem fx Tax.



New Comments. Adds comments in a worksheet.



Show/Hide All Comments. Displays all comments. Toggles between showing and hiding all comments in a worksheet.



Edit Comment. Allows you to edit the selected comment.



Delete Comments. Removes comments from a worksheet.



Check Source TB for Changes. Checks a source trial balance for changes, if you have imported data from a source Engagement trial balance to a target Engagement trial balance.

Engagement Toolbar - Word

The Microsoft Word toolbar consists of the following buttons:

Name Functions ▾

Name Functions. Inserts Client, Engagement, and Firm information links.

Date Functions ▾

Date Functions. Inserts Current and Prior date links.



Refresh. Refreshes all links in the workpaper, including Name, Date, and Trial Balance Links.
















Paste TB Link. Links data from your trial balance to your workpapers or financials. This information updates with trial balance changes.



Insert TB Link. Creates links from the trial balance, without having to open the trial balance.



Drill Down TB Link. Drills down to the accounts included in the linked formula.

-  **JE Summary.** Enables you to add, modify, or delete journal entries.
-  **Account Groupings.** Opens the *Account Groupings* window, where you group your accounts.
-  **TB Column Setup.** Opens the *TB Column Setup* window where you can modify the columns displayed in your trial balance. You can set up *Budget*, *Tax*, and *Variance* columns and more.
-  **Write Up Journal Entry.** Organizes the transaction data in journals.
-  **Consolidate.** Consolidates data from single company trial balances into a consolidated trial balance.
-  **Tickmark Toolbar.** Displays the tickmark toolbar.
-  **Insert Workpaper Reference.** Inserts a link to another workpaper in the binder.
-  **Open Workpaper Reference.** Opens the referenced workpaper.
-  **Freeze Links.** Freezes Engagement links for the workpaper so that links are not refreshed.
-  **Unfreeze Links.** Unfreezes Engagement links for the workpaper.
-  **Create Workpaper Note.** Creates a note for the workpaper.
-  **Insert CCH Footnote.** Inserts a CCH footnote.
-  **Toggle Field Codes/View Field Codes.** Toggles all links in Word on/off. When on, you can view and edit Engagement formula links directly.

Adding Items - File Room

New Client Folder



1. Click **New Client** on the toolbar.
2. Enter the client's information on the *Profile* tab.
3. Click the **Groups** tab to assign the client to a client group.
4. Click the **Contacts** tab to enter contact information.
5. Click **OK** when finished.

New Binder



1. Click **New Binder Wizard** on the toolbar.
2. Click **Next** on the *Welcome* dialog.
3. Select the client folder and click **Next**.
4. Select a central file room and click **Next**.
5. Select the source for the binder:
 - ◆ **Create binder from template.**
 - a. Select the tab containing the template.
 - b. Select a template and click **Next**.
 - ◆ **Create blank binder** (no tabs or workpapers). Click **Next**.
 - ◆ **Create binder from existing binder in your local file room.**
 - a. Select client folder that contains the binder.
 - b. Select the binder to use and click **Next**.
6. Enter the general properties of the binder and click **Next**.
7. Enter period information for the binder and click **Next**.
8. If you selected a template or existing binder with Knowledge Coach workpapers, the Knowledge Coach options page displays. Select the needed options, and then click **Next**.

9. Assign additional teams or staff to the binder by clicking the **Assign** buttons.



Note: To assign staff members after a binder has been created, select the binder in the File Room and then select **File/Properties**. On the *Binder Staff* tab, click the **Assign** button.

10. Click **Finish**.
11. Review the New Binder Summary Report and click **Create** to create the binder.
12. If this is a Knowledge Coach binder and you have selected to update content, you will need to select which title version to update to before the new binder can be created.

New Tab

To add a new tab, do the following:

1. In the Binder Index, right-click where you want the new tab.
2. Select **New Tab** from the list.
3. Enter the **Name** (required) and **Index #**.
4. Click **OK**.

New Workpaper

You can add a workpaper in one of the following ways:

New Workpaper from Template

1. Right-click the tab where you want the new workpaper.
2. Select **New Workpaper from Template**.
3. Select the tab containing the template.
4. Select the template to use and click **OK**.
5. Enter the **Name** (required) and **Index #**.
6. Click **OK**.

New Workpaper from File

1. Right-click the tab where you want the new workpaper.
2. Select **New Workpaper from File**.
3. Choose the location in the *Look in* field.
4. Select the file to insert and click **OK**.
5. Enter the **Name** (required) and **Index #**.
6. Click **OK**.

New Trial Balance

1. Right-click the tab where you want the new workpaper.
2. Select **New Trial Balance**.
3. Select the tab containing the template.
4. Select the template to use and click **OK**.
5. Enter the **Name** (required) and **Index #**.
6. Click **OK**.

New Manual Workpaper

1. Right-click the tab where you want the new workpaper.
2. Select **New Manual Workpaper**.
3. Enter the **Name** (required) and **Index #**.
4. Click **OK**.

New Placeholder

1. Right-click the tab where you want the new workpaper.
2. Select **New Placeholder**.
3. Enter a **Name** (required) and **Index #**.
4. Click **OK**.

New Knowledge Tools Workpaper

1. Right-click the tab where you want the new workpaper.
2. Select **New Knowledge Tools Workpaper**.
3. Select a title.
4. Select the workpapers from the title.
5. Click **OK**.

6. If needed, you can do the following for each workpaper to be inserted:
 - ◆ Enter an index
 - ◆ Change the workpaper name
 - ◆ Select the roll forward options

New Knowledge Coach Workpaper

1. Right-click the tab where you want the new workpaper.
2. Select **New Knowledge Coach Workpaper**.
3. Select an industry.
4. Select the workpapers from the industry.
5. Click OK.
6. If needed, you can do the following for each workpaper to be inserted:
 - ◆ Enter an index
 - ◆ Change the workpaper name
 - ◆ Select the roll forward options

New CCH Workpaper or New M & P (McGladrey & Pullen) Workpaper

1. Right-click the tab where you want the new workpaper.
2. Select **New CCH Workpaper or New M & P (McGladrey & Pullen) Workpaper**.
3. Select the title to use from the *Type* drop-down list.
4. Select the tab containing the template.
5. Select the template to use and click **OK**.
6. Enter the **Name** (required) and **Index #**.
7. Click **OK**.

New Workpaper from Scanner


1. Right-click the tab where you want the new workpaper.
2. Select **New Workpaper from Scanner**.
3. Select your scanner from the *Scanner* drop-down menu and click **Scan**.
4. Adjust any settings, and begin the scan according to your scanner's user guide.
5. Review a thumbnail image of each scanned page and click **Scan More** or **Finish**.
6. Enter the **Name** (required) and **Index #**.
7. Click **OK**.

Understanding the Trial Balance

While Trial Balances appear to be normal Excel files, they actually represent the databases that store all of your data. The three types of trial balances are as follows:


 Standard single company trial balance

 Consolidated trial balance


 Write Up trial balance


Trial balances created with a version of Engagement prior to 6.0 must be converted to Microsoft SQL Server database files. To do this, select **Start > Programs > ProSystem fx Engagement > Utilities**, and then click **ProSystem fx Engagement Trial Balance Conversion Wizard**. The wizard instructions will guide you through the conversion process.

If you prefer, trial balances can be converted when binders are synchronized in ProSystem fx Engagement.

 **Note:** See Advanced Trial Balance Functions on page 53 for details on creating consolidated and write up trial balances.

Opening a Trial Balance

 Click **Open Trial Balance** from the *Binder* window. This launches Excel, allowing you to view the trial balance.

 **Note:** If you have more than one trial balance in your binder, a window displays listing all trial balances. Select the appropriate trial balance and click **OK**.

Parts of a Trial Balance

There are three areas in the trial balance that allow you to change the way information is displayed.

- **Changing the View.** You can switch to any view you created in your trial balance from the *View* drop-down menu. The columns to the right of the *Account* and *Description* columns change based on your settings for that view in the *TB Column Setup*. Examples of column descriptions are *Unadjusted Balance*, *Final Balance*, and *Prior-Period Final Balance*. See *Setting Up Trial Balance Views* on page 33 for further details.



- **Changing the Grouping List.** You can switch to any grouping list you created in your trial balance from the *Group* drop-down menu. Different groups and sub-groups display in the *Account Group Summary* and *Account Sub-Group Summary* tabs. See the following section, *Changing Worksheet Tabs*, for details on worksheet tabs.



The *Account* column displays the group or sub-group index numbers you created. The *Description* column displays the group or sub-group descriptions you created. The Grouping lists are created, modified, and deleted from the *Account Grouping* window. See *Account Groupings* on page 43 for further details.

- **Changing Worksheet Tabs.** You can navigate among worksheets using the following tabs:

\Account Detail / Account Group Summary / Account Sub-Group Summary /

- ◆ **Account Detail.** This tab displays the trial balance by account number. Subtotaling cannot be performed on this worksheet. You can manually add subtotals to TB Reports generated from the trial balance.
- ◆ **Account Group Summary** and **Account Sub-Group Summary.** These tabs display the totals for each group or sub-group you created in the *Account Grouping* window. Change the Grouping List from the *Group* toolbar drop-down to change which groups or sub-groups you want displayed.

Using Trial Balance Functions

Setting Up Trial Balance Views

1. Select **TB Column Setup** from the Trial Balance menu in the *Binder* window.
2. In the *Trial Balance* field, select the trial balance with the columns you want to modify.
3. In the *View* field, select the view with the column setup you want to modify. Click **Options** to create a new view.
4. In the *Available Columns* field, select the period that contains the columns you want to select from. Select the available column on the left side and then select the right-pointing arrow to add the column to your view.
5. To add a variance column, click **Add Variance** and select the appropriate information in the *Column Properties* section.
6. Click **Close** to save your changes.

Converting and Importing Trial Balance Data

You can convert trial balance data from other supported trial balance software packages into an Engagement trial balance. You can also import trial balance data from another Engagement trial balance. For other cases, import the information using the Paste TB Import function.

Converting Trial Balance Data from ProSystem fx Write Up or ProSystem fx Trial Balance

1. Select **Import Conversion Wizard** from the *Trial Balance* menu in the *Binder* window.
2. Choose the source of your conversion file.
3. Click **Next**.

4. Select the ProSystem *fx* Engagement trial balance you want to transfer the data into from the *Select Trial Balance* drop-down list.
5. Select the ProSystem *fx* Trial Balance or Write-Up file from the *Select export file* drop-down list. If applicable, the default file or file extension is displayed to assist you.
6. Select the appropriate current period information, tax information, chart of accounts settings, and lead classifications options, as necessary.
7. Click **Finish**.

Converting Trial Balance Data from ATB for Windows, GoSystem Audit, or an ASCII Text File

1. Select **Import Conversion Wizard** from the *Trial Balance* menu in the *Binder* window.
2. Choose the source of your conversion file.
3. Click **Next**.
4. Select the ProSystem *fx* Engagement trial balance you want to transfer the data into from the *Select Trial Balance* drop-down list.
5. Select the source file for import.
6. Select the number of prior periods.
7. If importing from an ASCII Text file, select whether the source file is comma delimited or tab delimited.
8. If importing from GoSystem Audit, select the balance type to convert.
9. Click **Next**.

10. If importing from GoSystem Audit, do the following:
 - a. Select whether to convert all groupings, convert all and map to one Engagement grouping, or map to one Engagement grouping.
 - b. If you are mapping groupings, select the GoSystem Audit grouping to map from on the left, and select the ProSystem *fx* Engagement grouping to map to on the right.
 - c. Select the appropriate options for converting tax codes, if necessary.
 - d. Click **Next**.
11. On the *Chart of Accounts* screen, click the gray bar at the top of each column to select the appropriate header information. You can assign only one trial balance column to each column of imported data.
12. Select whether to append or overwrite the data in the existing trial balance.
13. Select the appropriate rounding options as necessary.
14. Click **Next**.
15. Click **Yes**.
16. Click **OK** to begin the conversion. The *Summary* screen displays.
17. Click **Finish**.


Importing from Creative Solutions Accounting


With Creative Solutions Accounting, you can import annual, semi-annual, quarterly, and monthly standard balances.



Important: Weekly, 13-period, budget and other balances, and write-up trial balances are not supported.

To import client data from Creative Solutions Accounting into an Engagement trial balance, complete the following:

1. Select **Import Conversion Wizard** from the *Trial Balance* Menu in the *Binder* Window.
2. Choose the source of your conversion file and click **Next**.
3. From the *Engagement trial balance* drop-down list, select the ProSystem *fx* trial balance you want to transfer into. Engagement Consolidated and Engagement Write-Up trial balances are not supported.
4. Select the client file (*.wsw or *.wsz file) to import, or click **Browse** to select a file.
 -  **Note:** If the CSA database is password protected, enter your password.
5. In the *Chart of accounts information* section, select whether to append or overwrite the existing data in the Engagement trial balance data.
6. Select the appropriate rounding options as necessary.
7. Check the **All active periods in CSA are closed (recommended)** box, if you do not want to import current period CSA data. When selected, the *CSA balance type to import as Engagement current unadjusted balance* field is disabled.
8. If converting CSA tax codes to Engagement tax code assignments, select the appropriate options in the *Tax information* section. Click **Next**.

- In the *Account groupings* section, select one of the following:
 - Convert all CSA account groups and grouping schedules
 - Convert all CSA groups and schedules and map one schedule to one Engagement grouping
 - Map the accounts from one CSA schedule to one Engagement grouping
-  **Note:** Accounts assigned to CSA account groups will not be assigned to the groups in the resulting Engagement grouping list since the assignment of ranges of accounts is not supported in Engagement. After the import is complete, you can map the accounts to the appropriate groups and subgroups using the Account Grouping option in Engagement.
- If you are mapping a CSA grouping schedule, first select the applicable CSA grouping schedule and Engagement grouping list. Then, select the CSA codes or subcodes to map from on the left, and select the Engagement groups or subgroups to map to on the right.
- Click **Finish**.

Importing Data from CaseWare

- Select **Import Conversion Wizard** from the *Trial Balance* menu in the *Binder* window.
- Choose the source of your conversion file and click **Next**.
- Select the ProSystem *fx* Engagement trial balance you want to transfer the data into from the *Select Engagement trial balance* drop-down list.

4. Select the client file for import.



Note: Only client files with the extension .ac are accepted. Compressed files with the extension .ac_ are **not** accepted.

5. Select the CaseWare entity.
6. In the *Chart of accounts information* section, select the period sequence, the current CaseWare period to import into Engagement, and the CaseWare current period balance type.
7. Select whether to append to or overwrite the existing data in the Engagement trial balance data.
8. Select the appropriate rounding options as necessary.
9. Select one of the following:
 - ◆ Convert all groupings
 - ◆ Convert all and map to one Engagement grouping
 - ◆ Map to one Engagement grouping
10. If you are mapping groupings, select the CaseWare grouping to map from on the left, and select the ProSystem *fx* Engagement grouping to map to on the right.
11. Click **Finish**.

Importing TB Data from a QuickBooks Excel TB Report

1. Export the QuickBooks Trial Balance report to Excel.



Note: You must select the **Use account numbers** and **Show lowest subaccount only** in QuickBooks.

2. Insert the QuickBooks Excel report in the binder (optional).
3. Do one of the following:
 - ◆ If the Excel report is in the binder, select **Import/Import Excel QuickBooks Data** from the TB Setup lookup item on the Engagement ribbon.

- ◆ If the Excel report is not inside the binder:
 - i. Open the Engagement trial balance where the data is to be imported.
 - ii. Open the QuickBooks Excel report and select **Import Excel QuickBooks Data** on the Engagement ribbon.
 - iii. Navigate to the Engagement trial balance and click **Paste TB Import**.
- 4. Define the columns by clicking the gray column header bar and selecting the appropriate column description from the menu that appears. Do this for all columns you want to import. Do not define the header for those you do not want to import.
- 5. Do one of the following:
 - ◆ Select **Append** to add your current data to the existing trial balance.
 - ◆ Select **Overwrite** to destroy all existing account data and journal entries. The accounts must be regrouped. Overwrite also unassigns all previous group and sub-groupings.
- 6. Correct duplicated account numbers, invalid accounts, and blank fields highlighted during import.
- 7. To round balances, select the place to round the account balances to in the *Round Balance to Nearest* field and complete the *Select Rounding Account* field.
- 8. Click **Next**.
- 9. Click **Yes**.
- 10. Click **OK**.
- 11. Review the statistical information and click **OK**.



Importing TB Data From an Excel File

1. Open the trial balance.
2. Open the Excel file containing your trial balance data.
3. Do the following to prepare the content for import:
 - ◆ Organize the data so that there are no blank rows in the data range.
 - ◆ Remove any of the following characters from the account number and balance columns: ' : " , | () * ? .
 - ◆ Verify that the total of each balance column nets to zero.
4. Select the range of data, excluding any column headers or balance checks, and select **Edit > Copy** in Excel.
5. Switch to the trial balance by selecting it from the window menu in Excel.
6. Click **Paste TB Import**.
7. Define the columns by clicking the gray column header bar and selecting the appropriate column description from the menu that appears. Do this for all columns you want to import. Do not define the header for those you do not want to import.
8. Do one of the following:
 - ◆ Select **Append** to add your current data to the existing trial balance.
 - ◆ Select **Overwrite** to destroy all existing account data and journal entries. The accounts must be regrouped. Overwrite also unassigns all previous group and sub-groupings.
9. Correct duplicated account numbers, invalid accounts, and blank fields highlighted during import.
10. To round balances, select the place to round the account balances to in the *Round Balance to Nearest* field and complete the *Select Rounding Account* field.



11. Click **Next**.
12. Click **Yes**.
13. Click **OK**.
14. Review the statistical information and click **OK**.

Importing TB Data From An Engagement Trial Balance

1. Open the trial balance to import data to.
2. Select **Engagement > Import from Engagement TB**.
3. Select the client name, binder, and trial balance from which to import. These fields are required.
4. If necessary, check the **Import current period balance** box and select the current period balance type to import.
5. If necessary, check the **Import prior period balance** box and select the prior period balance type to import.
6. If you checked *Import current period balance*, *Import prior period balance*, or both, choose whether to append or overwrite the data.



Note: If you have previously imported trial balance data from the source trial balance, the *Import status based on last binder synchronization* section displays the date and time of the last import, the date and time that the source binder was last synchronized, and the status of the source binder.

7. Click **Check for Source TB Changes** to determine whether any balance changes exist between the source trial balance and the target trial balance.
8. Click **OK**.

Checking for Changes to the Source Trial Balance

You can check for balance differences between a source Engagement trial balance and a target Engagement trial balance after you have imported data from one to the other. To check for changes:

1. From the *Binder* window, select **Trial Balance > Check for Source TB Changes**.
2. If more than one trial balance exists in the binder, the *Select Target Trial Balance* dialog displays. Select the target trial balance and click **OK**. The *Import from Engagement TB Log File* displays. Only accounts with balance differences are shown in the log file.



Note: If no differences between the source trial balance and the target trial balance are detected, a message displays. The log file does not display if there are no differences.

Chart of Accounts

Use the *Chart of Accounts* window to add, modify, and delete accounts.

1. Select **Chart of Accounts** from the *Trial Balance* menu in the *Binder* window.
2. Select the trial balance from the *Trial Balance* field.
3. Select the balance type from the lower field of the *Period and Balance type* group.
4. Do any of the following as needed:
 - ◆ To add an account to a trial balance, click **Add Account** and enter information for each new account. Added accounts need to be grouped.
 - ◆ To modify account information, click in the cell you want to modify and enter the change.
 - ◆ To delete an account, click the account row and then click **Delete Account**. Deleted accounts remove the prior year information.

TB Edit Mode

Use TB Edit Mode to manually enter current period balances or to modify prior period amounts.



Click **TB Edit Mode** when the trial balance is open to enter information directly into the database. Toggle this on or off by clicking the toolbar button.

Account Groupings

1. Select **Account Groupings** from the *Trial Balance* menu in the *Binder* window.
2. Select the trial balance where you want to group accounts from the *Trial Balance* drop-down menu.
3. Select the Account Grouping List you would like to group the accounts to from the *Grouping List* drop-down list.
4. Add groups or sub-groups by right-clicking in the *Groups and Sub-groups* window.




Note: You may also add groups or sub-groups by clicking **Advanced** below the window.

5. Click **Close** when finished.
6. You can assign Account and Ratio Classifications when editing a group or sub-group by clicking **Advanced** or by assigning the classification when the group or sub-group is created. These classifications are used to break down balances and calculate net income or loss for the period. These classifications may also be used for TB Links.



Note: If Account and Ratio Classifications are assigned, the Quickview option displays the balances broken down by assets, liabilities and equity, revenue, expenses, and net income. Select **Quickview** from the *Trial Balance* menu in the *Binder* window.

7. Select the account(s) you want to group from the *Account and Description* columns displayed on the left. Drag the account(s) to the Group or Sub-Group folders on the right. Continue this process until all the accounts are grouped.
 **Note:** Use the *Account and Description Filters* fields to show only the accounts you want to group. Use a question mark (?) as a place holder and an asterisk (*) as a wildcard. For example, to display all accounts with 5 as the second character, such as 1500-01-1000, type ?5*.
8. Click the **Options** button to administer your Grouping Lists. You can create new groups, delete or rename existing groups, and export groups from this window. You can also access standard Tax Line Grouping lists by clicking **Import**.
9. Click **Close** when you are finished administering your Grouping Lists.
10. Click **Close** when you are finished grouping accounts.

Journal Entries


1. Select **Journal Entry Summary** from the *Trial Balance* menu in the *Binder* window.
2. From the *Trial Balance* drop-down list, select the trial balance to which to post the journal entry.
3. In the *Type* pane, select the type of entry.
4. Click **New** to open the *Journal Entry Detail* window.
5. Enter the journal entry number, description and W/P reference in the appropriate fields.
6. Select the accounts for the entry by double-clicking an account on the left-hand side.



Note: Click **Add Account** to create accounts that are not in the Chart of Accounts. Click **Remove JE Line** to remove the

selected account from the journal entry field.


7. Enter the amounts in the cells.
8. Select one of the following:
 - ◆ **Save and New** to record another entry.
 - ◆ **Save and Close** to return to the *Journal Entry Summary* screen.

 **Note:** From the *Journal Entry Summary* screen, you can reclassify any entry to another journal entry type by dragging and dropping the journal entry to the appropriate icon in the left pane. Click **Close** when finished.


Recording Transactions in Write Up Trial Balances

To record transactions in write up trial balances, follow these steps:

1. Open the write up trial balance.
2. Click **Write Up Journal Entry** on the toolbar.
3. From the *Trial Balance* drop-down menu, select the trial balance you want to post transactions to.
4. Select the journal to use to enter the transactions.
5. Click **New** to start entering your transaction. Enter the *Date*, *Ref*, *Transaction*, *Account #*, *Account Description*, and *Debit* and *Credit* amounts.

 **Note:** Click **Options** for choices involving dates, reference numbers, or account numbers.

6. Click **Close** to finish entering transactions.

 **Note:** See *Advanced Trial Balance Functions* on page 53 for instructions on how to create write up trial balances.

Reports

There are four types of reports created by Engagement:

- Journal Entry (JE)
- Trial Balance (TB)
- Consolidated
- Write Up

JE Reports

1. Open the trial balance.
2. Select **Create Reports > Journal Entry Reports** from the *Engagement* menu.
3. Select the trial balance from the *Trial Balance* list.
4. Place a check in the box for each type of JE Report to create.
5. Click **OK**. The reports are placed in the *Unfiled Workpapers* tab in your Engagement binder. From there, you can rename the files and then drag them to the appropriate tabs.

TB Reports



1. Open the trial balance.
2. Click **Create TB Report** on the toolbar.
3. Select the trial balance from the *Trial Balance* list.
4. Select the Grouping List to generate the report from.
5. Choose one of the following in the *Account Groups* section:
 - ◆ **Include selected**. Includes only the groups you place checkmarks by.
 - ◆ **Include current and future**. Includes all groups that are currently in the selected grouping list and automatically adds any groups that are created in the future.



Note: If you select **Include current and future**, you may select the **Classified Report** option to create a report that is organized by the account and ratio classifications assigned to the groups and sub-groups.

6. Choose the appropriate radio button in the *Report Type* field to choose the level of detail:
 - ◆ **Summary - Groups**. Summarizes your report at the Group level.
 - ◆ **Summary - Sub-Groups**. Summarizes your report at the Sub-Group level.
 - ◆ **Detail**. Displays all charts of accounts organized into the groups and sub-groups. If you check the **Combine Groups** box, the information generates in one report. Otherwise, a separate report is generated for each selected group.
7. Enter a name in the *Report Name Guide* field.
8. Select from the following options:
 - ◆ **Hide empty groups and sub-groups** and **Hide accounts with zero balances**. Hides indicated items.
 - ◆ **Print as Black and White**. Sets the default print settings to black and white.
 - ◆ **Show W/P Ref Columns**. Displays workpaper references created in the trial balance.
 - ◆ **Include sum of account groups**. Subtotals the groups within a classified report.
 - ◆ **Include net income**. Displays net income amount on an unclassified report. Note that net income will always be included on classified reports.
9. Click **Format** to select which trial balance columns you want to include in the report.

Using Trial Balance Functions

- ◆ Drag columns from left to right to add them.
 - ◆ Drag columns from right to left to remove them.
 - ◆ Add Variance columns as needed.
10. Click **OK** to save your column setup.
 11. Click **OK** to create the reports. The reports are stored in the *Unfiled Workpapers* tab in your Engagement binder.



Notes:

- See Appendix on page 74 for sample TB Report Settings.
- To modify the report setup after you create it, open the report and then from the Engagement menu, select **Properties**. Make your changes as noted in the steps above and click **OK** to save them.

Consolidated Reports

1. Open the consolidated trial balance.
2. Select **Create Reports > Consolidated Reports** from the *Engagement* menu.
3. Select the report options, as desired. These options are the same as with a regular trial balance.
4. Click **OK** to create the report. The report will be stored in the *Unfiled Workpapers* tab of your Engagement binder.



Note: See Advanced Trial Balance Functions on page 53 for instructions on how to create consolidated trial balances.

Write Up Reports

Engagement provides the following three write up reports to display the information entered in write up journals:

- **Write Up Detail.** This report will show the detail of the entries in the selected journal. The columns in the report are the same as in the journal.

- **G/L Current and G/L YTD.** These two reports show the accounts in the trial balance, their beginning balance, transaction amounts, and ending balance for the current or YTD period, whichever you select.

Creating the Write Up Detail Report

1. Select **Create Reports > Write Up Reports > Write Up Detail Report** from the *Engagement* menu.
2. Select the trial balance from the drop-down list.
3. Check the boxes for the specific write up journals you want to create.
4. Click **OK** to create the report. The report is stored in the *Unfiled Workpapers* tab in your Engagement binder.

Creating G/L Current and G/L YTD Reports

1. Select **Create Reports > Write Up Report** from the *Engagement* menu.
2. Select **G/L Current Report** or **G/L YTD Report**. The *Select Journal Entry* dialog displays.



Important: If you select **G/L YTD Report** for a non-annual binder, the *Select Journal Entry* dialog does not display. The report is created with only write up journal entries.

3. Select the types of journal entries to include in the report. By default, Client Journal Entries and Adjusting Journal Entries are already selected.
4. Click **OK**. The report is stored in the *Unfiled Workpapers* tab of your Engagement binder.



Note: See Advanced Trial Balance Functions on page 53 for instructions on how to create write up trial balances.

Linking to the Trial Balance

Name and Date Links

Name and date links enable you to insert information about the client, firm, binder, workpaper, or dates related to the engagement.

- Name information comes from the *Properties* window of the client, firm, binder, or workpaper.
- Date links are calculated from the *Periods* and *Dates* tabs in the *Binder Properties* window.

To insert name or date functions, do the following:

1. Open the workpaper.
2. Do one of the following:
 - ◆ In Excel, click the cell where you want to insert the link.
 - ◆ In Word, either place your cursor where you want to insert the link or highlight the text that you want to replace with a Name or Date link.
3. Click **Name Functions** or **Date Functions** on the Engagement toolbar. A menu of name or date functions displays.
4. Select the name or date option you want to insert.

Linking Trial Balance Data

This section explains the two methods for linking trial balance data.

Copying and Pasting TB Links

1. Open both the trial balance and the Excel or Word workpaper you want to link.
2. Activate the trial balance in Excel by selecting it from the *Window* menu, and select the trial balance cell(s) you want to link to the workpaper. Click **Copy TB Link**.
3. Switch to the workpaper you want to paste the link(s) to.



4. Select the area you want to paste the links into.
5. Do one of the following when pasting a link into one of the areas listed below:
 - ◆ **Excel spreadsheet.** Select the cell or the first cell in the range if you are pasting multiple cells and click **Paste TB Link**.
 - ◆ **Word Table.** Highlight the entire table cell and click **Paste TB Link**.
 - ◆ **Word Paragraph.** Insert the cursor where you want the data to appear or select the text to replace, and then click **Paste TB Link**.
6. Select the options you want to use from the window that appears.
7. Click **OK** when finished setting the paste options.

Inserting TB Link

1. Open the Excel or Word workpaper.
2. Place the cursor where you want to insert the TB Link.
3. Click **Insert TB Link** on the toolbar.
4. Build a formula using the six parameters: *Trial Balance*, *Account Grouping*, *Type*, *Period*, *Balance Type*, and *Account/Index #*.
5. If you want to round the amounts used in the formula, check the **Round** box and select the number of places after the decimal to round to.
6. Select **Sign options** in Excel or Word, and select **Negative style**, **Numeric style**, and **Zero style** in Word.
7. Click **Insert** once you have selected the parameters for the formula. The formula will appear in the *TB Link Formula* box.
8. A plus sign (+) appears at the end of the formula. You can add to the existing formula by selecting the appropriate parameters

again and clicking **Insert**.

9. Click **Paste** to insert the TB Link into the workpaper.

Analyzing a TB Link Formula

To view a TB Link in Excel, click on a cell containing the TB Link. The formula will appear in the formula bar.

In Word, click Toggle Field Codes or View Field Codes. A Word formula has several formatting parameters, but within this formula you will see the same formula noted in Excel:

```
TBLink("TB", "FINAL[7]", "4110", "15", "1", "0")
```

- **TB** represents the name you gave the trial balance database you linked from.
- **FINAL[7]** represents the trial balance column you linked from. FINAL shows the Abbreviation you defined in the *TB Column Setup* window. [7] is the column ID assigned by Engagement.
- **4110** represents the index assigned to an account class, ratio class, account group, account sub-group, or the account number if linked to the Account Detail.
- **15** represents the Grouping List ID number.
- **1** represents the trial balance tab you linked from or the account type you linked: "1" = Group Summary tab, "2" = Sub-Group Summary tab, and "3" = Account Detail tab, "-1" = Account Class, "-2" = Account Type, "0" = Ratio Class.
- **0** is reserved for future use.

Drill Down to Trial Balance Accounts

Once TB Links are created in the Excel or Word workpapers, you can drill down to the accounts that make up the dollar amounts calculated in the linked formula.

1. Open the Excel or Word workpaper.
2. Do one of the following:
 - ◆ In Excel, click the cell with the linked formula.
 - ◆ In Word, highlight the linked field.
3. Click **Drill Down TB Link**.
4. Click **Close** when finished.



Advanced Trial Balance Functions

Consolidating Trial Balances

Consolidations occur at the trial balance level within one Engagement binder. You will set up a trial balance for each subsidiary and then consolidate them into a consolidated trial balance.

To create a consolidated trial balance, do the following:

1. Select the tab you want to insert the trial balance into from the *Binder* window.
2. Click **New Trial Balance** on the *Binder* window.
3. Click the **Consolidated** tab.
4. Select the **Consolidated Trial Balance - 2 Year** template.
5. Click **OK**.
6. Complete the *Index #* and *Name* fields in the *Workpaper Properties* dialog.
7. Click **OK** to create the trial balance.



Consolidating Subsidiary Trial Balances

You can consolidate subsidiary trial balances into a blank consolidated trial balance. To consolidate subsidiary trial balances, do the following:



1. Open the consolidated trial balance.
2. Click **Consolidate** on the Engagement toolbar.
3. From the *Consolidated Trial Balance* drop-down list, select the trial balance you want to hold the consolidated information.
4. Click **Add** to add a subsidiary trial balance.
5. Select the trial balance from the *Trial Balance* list.
6. Type the abbreviation you want for the column heading.
7. Select a grouping from the *Grouping List* drop-down.
8. Check the **Overriding List** box if you want to take precedence over the trial balance(s) when there are conflicts with the description of the grouping basis or grouping codes.
9. Select the balance type to consolidate in the *Balance* field.
10. To add more subsidiaries, click **Add** and repeat steps 5 through 9.
11. Select the consolidation basis based on groups, sub-groups or account detail.
12. Select how you would like numbers to be rounded from the *Rounding* drop-down list.
13. Select the **Number of Prior Periods** you want to gather during consolidation.
14. Click **OK** to consolidate.



Note: See Reports on page 46 for instructions on how to create consolidated reports. See Journal Entries on page 44 for instructions on eliminating journal entries.

Write Up Trial Balances

Write up trial balances allow you to enter transactions into write up journals or book client journal entries. To create a write up trial balance, follow these steps:

1. Select the tab you want to insert the trial balance into from the *Binder* window.
2. Click **New Trial Balance** on the toolbar.
3. Click the **Write Up** tab.
4. Select the **Write Up** template.
5. Click **OK** to display the *Workpaper Properties* dialog.
6. Complete the *Index #* and *Name* fields.
7. Click **OK** to create the write up trial balance.



If you prefer to book standard two-sided entries as Client Journal Entries, instead of the transaction journals, see Journal Entries on page 44. You can choose one of the two methods for entering Client Journal Entries. Either method will display in the *CJE* column of the write up trial balance.



Note: See Reports on page 46 for information on creating write up reports.

Exporting to Tax Software

To export your trial balance data to a supported tax software package, you must have grouped your accounts to one of the Account Grouping Lists. See Account Groupings on page 43 for instructions on grouping accounts.

Follow these steps to export the data:

1. Click **Tax Software Interface** from the *Binder* window.
2. Select the vendor you will be exporting to from the *Tax Software* drop-down list.



3. Verify the appropriate tax Account Grouping List is selected in the *Grouping* drop-down list.
4. In *Configuration information*, enter the **Tax year**, **Grouping**, **Balance**, and **Employer ID #**.
5. Select the balance you want to export from the *Balance* drop-down list. The *Export Prior Year* checkbox is always checked to export that information.



Note: You must control the import of prior year information in the tax program.

6. In *Export information*, Engagement provides default paths and names for the information you need to export to the respective tax vendor; however, you may need to browse to the appropriate directory by clicking **Browse**.
7. Click **OK** after you have set all the options. A report lists any ungrouped accounts. If any are listed you will need to go back to the *Account Grouping* window to make your corrections and re-export the data.



Tip: When customizing a tax Account Grouping List, you can add sub-groups to groups that support detail schedules in your tax software. The sub-group descriptions will appear as the description on the detail schedule.

You cannot add groups to a tax Account Grouping List, as they will not export to your tax software. Also, you can choose which groups or sub-groups should be exported by selecting the **Send to Tax** option in the group or sub-group properties.

Sharing Workpapers

Only the Current Editor (in a non-shared file room) or the Live Editor (in a shared file room) can make changes to a workpaper. Other team members will have a read-only copy of the workpaper.

When you check unassigned workpapers out of the central file room, you become the Current Editor. You remain the Current Editor until you check in the workpaper to the central file room or assign the workpaper to another team member.

There are five methods you can use to share workpapers:

- Shared Local File Room
- Synchronize Binder
- Synchronize Selected Workpapers
- Express Synchronization
- Binder Packages

When the Engagement team is **attached to an office network**, the central file room will be utilized to share and distribute binders. When you log in to Engagement from the Office, the program will display the central file rooms that have been set up.

When the Engagement team is **attached to a peer-to-peer network** in the field, they will be able to share and distribute binders directly with each other. When you log in to Engagement from the Field, each staff member assigned to binders in your local file room displays.

When you are **not on a network** or you **need to email a binder to a staff member**, you do not synchronize to the central file room or to another staff member's local file room. See Binder Packages on page 61 for further details.

Shared File Rooms

Shared local file rooms allow multiple Engagement users to work directly with workpapers in the same binder without synchronizing with a central file room, checking out workpapers, or assigning workpapers.

To work with shared file rooms, the option must be enabled for your firm in Administrator, and you must belong to a staff group that allows sharing of local file rooms.

A Host selects to share his or her local file room, and then other users can log in to the shared file room. Users can open any workpaper in the Host's file room, as long as the Host is the Current Editor.

Sharing a Local File Room

To share a file room, do the following:

1. Log in to Engagement as either Office or Field.
2. Right-click within the file room frame.
3. Select **Share File Room**.

To stop sharing a file room, do the following:

1. Log in to Engagement as either Office or Field.
2. Right-click within the file room frame.
3. Select **Stop Sharing File Room**.

Editing Workpapers in a Shared File Room

Working with workpapers in a shared file room is similar to working in your own local file room. When you open a binder in the Host's local file room, the Binder View displays.

The *Live Editor* column displays the current status of each workpaper. The following statuses are displayed:

- **(User Name)**. The user whose name displays is currently the Live Editor of the workpaper. You can view a read-only copy of the workpaper until the Live Editor closes it.
- **<Available>**. The local file room's Host is the Current Editor of the workpaper, and no other users are currently working on the workpaper. These workpapers are available for you to open and edit.
- **<Unavailable>**. The Host is not Current Editor of the workpaper.

Click on any workpaper with <Available> displayed in the *Live Editor* column to edit the workpaper. Close the workpaper when you finish editing it. There is no synchronization or check-in required.

Synchronize Binder

Use Synchronize Binder if you want to update changes made to workpapers with other staff members.



1. Select the binder in the *File Room* window.
2. Click **Synchronize Binder** on the toolbar.
3. Click **Next** on the *Synchronize Binder Wizard* Welcome screen.
4. Select the **Staff** or **Buddy List** member you want to synchronize with. If you are synchronizing the binder in the field environment with a staff member whose computer is not listed in the *Existing Locations* drop-down list, browse to the appropriate path in the *Alternate Locations* field, then click **Next**. The *Synchronize Entire Binder or Selected Workpapers* dialog displays.
5. Select whether to synchronize the entire binder including all workpapers, or to synchronize only workpapers you select.
6. Click **Next**. If you have current editor rights for any workpaper, the *Assign Workpapers* dialog appears. Select the workpapers you would like to assign to the staff member's local file room. When you assign the workpapers, you no longer have current editor rights to these workpapers in your local file room.
7. Click **Next**. If you are synchronizing only selected workpapers, and new workpapers exist in either your local file room or the remote file room, the *Synchronize Workpaper from your LOCAL File Room* or *Synchronize Workpaper from REMOTE File Room* dialog displays, as appropriate. Select the workpapers to synchronize.
8. Click **Next**. The *Completing the Synchronization Wizard* dialog

displays.

9. Click **Synchronize**.

Synchronize Individual Workpapers

When logged in from the Field, you can synchronize selected workpapers with other staff members or a staff member in your Buddy List.

1. Open the binder containing the workpapers to synchronize.
2. Select the workpapers to synchronize. If you are synchronizing multiple workpapers, press **Shift** to select contiguous workpapers, or press **Ctrl** to select non-contiguous workpapers.
3. Right-click the selected workpapers and select **Synchronize Workpaper**, or select **Workpaper > Synchronize Workpaper**. The *Synchronize Target* dialog displays.
4. Select the target to synchronize with.
5. Click **OK**. The *Synchronize Workpaper* dialog displays a list of selected workpapers that are available for synchronization.
6. Click **Synchronize**. The *Synchronization Job Queue* dialog displays the progress of the synchronization. You can click **Hide** to close the dialog.

Express Synchronization

Express Synchronization automatically synchronizes changes from the local file room to the central file room, and from the central file room to the local file room, without opening the *Synchronize Binder Wizard*. You do not have the option to check workpapers in or out.

To perform an express synchronization, do the following:

1. Select the binder in the *File Room* window.
2. Click **Express Synchronization** on the toolbar.



Binder Packages

Creating a Binder Package



1. From the File Room, select the binder you want to package.
2. Click **Create Binder Package** from the *File Room* window.
3. Select the workpapers to include in the binder package.
4. Select how you want to distribute the binder package.
 - ◆ To save the binder package as a file, select the **Save package to a file** option. Verify the path and file name of the binder file.
 - ◆ To send the binder package as an email attachment, select **Send package via email**.
5. Click **OK**.

Receiving a Binder Package

After a binder package has been created, other Engagement staff members can receive the file. To receive a binder package, follow these steps:



1. Click **Receive Binder Package** from the *File Room* window.
 - 📄 **Note:** If you are receiving a binder package via email and you use Microsoft Outlook, select **Engagement > Receive Binder Package** in Outlook.
2. Browse to the binder package file (with an AZP extension) to receive.

3. When you receive a binder, one of two events will occur:
 - ◆ If you do not have this binder, Engagement will find the client folder and attempt to insert the binder into the client folder. If the client folder does not exist, Engagement will create it.
 - ◆ If you have this binder, Engagement will check the binder you are receiving and the binder you already have to determine if there are any conflicts. If different Current Editors of the same workpaper exist and the copy of the original Current Editor has been modified, then you will be warned of a conflict when you open the binder.



Note: During synchronization, conflicts between the binder in the local file room and the binder in the central file room cause the *Synchronization Conflicts* dialog to appear. These conflicts arise when each copy has a different Current Editor and the copy of the original Current Editor has been modified, which also includes changes to the properties of the workpaper. To resolve the conflict, specify whether the Local copy or the Remote (remote local file room, central file room, or binder package) copy of the binder should "win," becoming the only file to remain between the two. You can view the details of the conflict by clicking **View Details**. Click **OK** to continue.

Reviewing Workpapers


Workpaper Notes

There are three types of workpaper review notes you can use to electronically communicate during an engagement:

- Open Item
- Team Note
- Note for Next Period

You can use the *Notes* pane in the *Binder* window or the *Notes Summary View* to keep track of which notes require response, clearing, or deletion.

Creating a Workpaper or Workpaper Tab Note

- 
1. Select the workpaper or workpaper tab from the *Binder* window.
 2. Click **Create Workpaper Note**.
 3. Select the type of note from the drop-down list.
 4. To address the note to an individual team member, uncheck the **All Binder Staff** checkbox and select a specific staff member.
 5. Enter the note's subject in the *Subject* field.
 6. Enter the note's text in the *Note* field.
 7. Click **OK** to save your note. The note information appears in the *Notes* pane.

Responding to, Clearing, or Deleting a Note

To clear, delete, or respond to a workpaper or workpaper tab note, do the following:

1. Click the **Notes Summary View** tab in the *Binder* window.
2. Right-click the note and select one of the following:
 - ◆ **Respond to Note** allows you to reply. Enter a response. Click **OK** to save your text.

- ◆ **Clear Note** crosses out content and any replies. A record of the note remains in the *Binder View* and *Notes Summary View*. The status changes to cleared.
- ◆ **Delete Note** erases the note.

Workpaper Sign Off

You can sign off workpapers as the Preparer and/or the Reviewer. A workpaper can have multiple Preparers and Reviewers.

To sign off a workpaper, do the following:

1. Select the workpaper in the *Binder* window.
2. Click **Sign Off Workpaper**.
3. Select your name from the *Current User* drop-down menu.
4. The Date will default to today's date. Select a different date if necessary.
5. Add or update your sign off signature by clicking the **plus sign (+)** in the *Preparer* or *Reviewer* field. Click the **minus sign (-)** to remove your sign off.
6. Click **OK** to save your changes.



You can manage the sign-off status of Engagement workpapers by selecting the **Sign Off Summary View** tab.

Lock/Unlock Workpapers

After the workpaper has been reviewed and signed off, you may want to lock the workpaper. A workpaper that is locked is read-only. Links will continue to update provided they are not frozen.

To lock or unlock a workpaper, follow these steps:



1. Select the workpaper you want to lock or unlock from the *Binder* window.



2. Click the **Lock Workpaper** or **Unlock Workpaper** button. When the workpaper is locked, the Lock symbol appears. The workpaper is now a read-only file.

Freeze/Unfreeze Workpapers

There may be situations where you want to freeze a workpaper. Engagement links such as name and date links and TB links in a workpaper that is frozen are not updated if changes are made to the trial balance.

To freeze or unfreeze a workpaper, follow these steps:



1. Select the workpaper in the *Binder* window.
2. Click **Freeze Engagement Links**, represented by a broken chain, or **Unfreeze Engagement Links**, represented by a solid chain.



Note: If you publish a workpaper with frozen links, the published workpaper will contain the values of the links when frozen.

Tickmarks

Using the Tickmark Definition List

The tickmark definition list contains the tickmark symbols (images) and descriptions.

To use the tickmark definition list, follow these steps:

1. Open a report or workpaper in Excel, Word, or Adobe Acrobat.
2. Select **Engagement > Tickmark > Tickmark Definition**.
3. To add your own tickmarks to this list, click **Add**.
4. Enter the tickmark name and description. Browse to a 16-color, 16 x 16 pixel bitmap picture and click **Open**. You are returned to

the *Tickmark Definition* dialog, and your image appears in the left-hand column.

5. Click **Close**.



Note: To delete a tickmark, highlight the tickmark and click **Delete**.

Inserting Tickmarks

To insert a tickmark symbol in an Excel, Word, or Adobe Reader/ Acrobat 9 or earlier, do the following:

1. Open an Excel, Word, or Adobe PDF workpaper.
2. Click the **Tickmark Toolbar** button.
3. Do one of the following:



- ◆ If you are using Microsoft Word or Excel, click where you want to insert the tickmark, and then click the tickmark symbol in the Tickmark Toolbar.
- ◆ If you are using Adobe, click the tickmark symbol in the Tickmark Toolbar, and then click where you want the tickmark to be displayed.

The tickmark symbol displays in the designated spot. (In Excel, the tickmark appears on top of the cell.)

To insert a tickmark symbol using Adobe Reader/ Acrobat 10, do the following:

1. Open the workpaper in Adobe Reader 10 or Acrobat 10.
2. Click **Tools** on the Quick Tools bar. The Tools pane displays on the right.
3. Click **Plug-in Engagement Tickmark** on the Tools pane. The Engagement tickmarks display.
4. Click the tickmark symbol in the Tools pane, and then click where you want the tickmark to be displayed in the PDF.

Tip: You can right-click any tickmark to add it to the Quick Tools bar.

Workpaper Reference Links

Inserting Workpaper Reference Links

1. Open an Excel, Word, or Adobe Acrobat workpaper.
2. Follow these steps if you are working with Excel or Word:
 - a. Click in the cell (Excel) or place the cursor in the document (Word) where you want to insert the workpaper reference link.



- b. Click **Insert WP Reference**.

Follow these steps if you are working with Acrobat:

- a. Click **Insert WP Reference**.
 - b. Click the location in the workpaper where you want the workpaper reference to be placed.
3. Select the workpaper you want to reference.
 4. Click **Insert**.
 5. Click **Close**.

Opening Referenced Workpapers

To open a referenced workpaper, do the following:

1. Open the Excel, Word, or Adobe Acrobat workpaper.
2. Click in the cell containing the reference (Excel) or highlight the workpaper reference (Word or Acrobat) you want to open.
3. Click **Open WP Reference**.



Publishing Workpapers

If you want to send someone an electronic copy of a Word or Excel workpaper, you should publish the workpaper. A published workpaper is a copy of a workpaper in which the formulas (such as, trial balance links) have been converted to values. This allows you to share the workpaper with people who do not have access to the trial balance database.

To publish a workpaper, follow these steps:

1. Select the workpaper you want to publish in the *Binder* window.
2. Click **Publish Workpaper**.



A copy of the workpaper is filed in the *Published Workpapers* tab in the *Binder* window. The original name of the workpaper now has - *Published* appended to the end. All of the formulas, such as dates, names, and amounts, have been converted to values. This published workpaper will not be updated because the formulas no longer exist.

Other Common Features


Creating Templates

This section includes procedures for creating the following templates:

- Trial Balance
- Workpaper
- Account Groupings
- Print Groups
- Tickmarks
- TB Links

Trial Balance Templates

If there is a trial balance that has a format you use frequently, you can save it as a template.

 **Note:** Trial balance templates created with a version of Engagement prior to 6.0 must be converted to a format supported by Microsoft SQL Server database. To do this, select **File > Convert Trial Balance Templates** in the ProSystem fx Engagement File Room.

Follow these steps to save a trial balance as a template:

1. Open the trial balance.
2. Select **Engagement > Properties**.
3. Uncheck **Hide zero balance groups and sub-groups** and **Hide zero balance accounts**. The numbers and groups will now show up on the trial balance when it is created from this template.
4. Click **OK**.
5. Close the trial balance.
6. Right-click the trial balance in the *Binder* window and select **Save as Template**.

7. Select the template folder where you will save the template.
8. Type the file name for the template.
9. Check the **Clear chart of accounts** box if you do not want to save the account numbers and descriptions in the template.
10. Check the **Save journal entries** box to save the journal entries (accounts and amounts) in the template.
11. Click **Save**.

Workpaper Templates

If there is a workpaper format you use frequently, you can save it as a template. Follow these steps to save a workpaper as a template:

1. Select the workpaper in the *Binder* window.
2. Right-click the workpaper you want to make into a template and select **Save As Template**.
3. Keep the default path and name, or browse for the path and type a name for the template and click **Save**.



Note: Knowledge Coach workpapers cannot be saved as templates. Instead, you can copy Knowledge Coach workpapers from one binder to another.

Account Grouping Templates

To use an account grouping in another trial balance, you can follow these steps to save an account grouping as a template:

1. Select **Trial Balance > Account Groupings** from the *Binder* window.
2. In the *Trial Balance and Grouping List* field, click the **Options** button. The *Grouping List Options* dialog displays.
3. Select a grouping from the grouping lists shown.
4. Click **Export**.

5. Browse for the path and enter a file name.
6. Click **Save** to create the template, and click **Close** to close the *Grouping List Options* dialog.

Print Group Templates

To print a group of workpapers and save a print group as a template, follow these steps:

1. Select **File > Print Group** in the *Binder* window. The *Print Group* dialog displays.
2. Select the workpapers in the print group from the left side.
3. Click **Save Print Group**.
4. Enter a name in the *File name* field.
5. Click **Save**.

Tickmark Templates

To share tickmarks with other team members and save them as templates, follow these steps:

1. Open an Excel, Word, or Adobe Acrobat workpaper.
2. Select **Engagement > Tickmark > Tickmark Definition**.
3. Click **Export**.
4. Browse for the path and click **Save**.

For further information, see *Using the Tickmark Definition List* on page 65.

Saving TB Link Formulas

To save TB Link formulas (e.g., complex ratios) as templates for other workpapers, follow these steps:




1. Build a TB Link formula using the **Insert TB Link** function. See *Linking to the Trial Balance* on page 50 for further details.
2. In the *Insert TB Link* window, click **Save**.

3. Type a name and description for your saved TB Link formula.
4. Click **Close**.

Renaming Items

Throughout the system, you can rename items by selecting the items you want to rename and clicking the **Properties** toolbar button. Make your changes and click **OK** to save them.

Deleting Items

 **Warning:** When a Knowledge Coach workpaper is deleted, it is removed permanently. It is not sent to the Trash folder and cannot be restored.

To delete items in the file room, select the item(s) to delete and press **DEL**. These items are permanently deleted.

To delete items in the *Binder* window, select the item(s) to delete and press **DEL**. The items are now in the Trash.

 **Notes:**

- To restore an item deleted from the *Binder* Window, right-click the **Trash** icon and select **Restore All**, or right-click on individual workpapers and select **Restore**.
- Depending on the settings in Administrator, upon closing a binder Engagement will keep the items in the trash, prompt you to delete the items in the trash, or automatically delete the items in the trash.

Getting More Information

For more detailed information on these functions, and to better understand their underlying concepts, you can refer to the following sources:

- Tip of the Day
- User Guide (see **Help** menu in Engagement)
- Online Help (see **Help** menu in Engagement)
- Technical Support at <https://support.cch.com/engagement>

CCH INCORPORATED, a Wolters Kluwer business, provides hands-on, detailed training on all the information contained in this guide. Consulting services are also available to assist you in the development of procedures and templates, so that you may fully experience the benefits of ProSystem *fx* Engagement. For more information about Training & Consulting Services, contact our Customer Training department at (310) 802-8310.

Contacting ProSystem *fx* Engagement

Technical Support

Hours: 6:00 a.m. to 5:00 p.m. U.S. Pacific Time, Monday through Friday

Phone: (800) 739-9998, option 4

Fax: (316) 612-3405

Product Updates, FAQs and more

Visit: <https://support.cch.com/engagement>

Training & Consulting

Attention: Engagement Training Coordinator

CCH, a Wolters Kluwer business

Customer Training Department - M/S 21

20101 Hamilton Ave. Suite 200 Torrance, CA 90502

Phone: Training Coordinator at (310) 802-8310

Email: training_coordinator@cch.com

Appendix

TB Report Sample Settings

The following table includes TB Report settings for common reports used in an engagement. You can also customize any report to show the information you need.

Report Name	Account Group - radio button	Report Type	Format - columns included
Leadsheet(s)	Include selected (Check boxes as needed)	Detail	PY-Final CY-Unadjusted CY-AJE CY-Final
Working Trial Balance	Include current and future (Classified report)	Detail Combine Groups	PY-Final CY-Unadjusted CY-AJE CY-Final
Preliminary Analytical Review	Include current and future	Summary by Group or Sub-group (Include Net Income)	PY-Final CY-Unadjusted \$-Variance %-Variance
Final Analytical Review	Include current and future	Summary by Group or Sub-group (Include	PY-Final CY-Final \$-Variance %-Variance

Appendix

Report Name	Account Group - radio button	Report Type	Format - columns included
		Net Income)	
Budget-to-Actual	Include selected (Click Select All)	Detail	CY-Budget CY-Final \$-Variance %-Variance
Book-to-Tax	Include current and future (Classified report)	Detail Combine Groups	CY-Adjusted CY-FTJE CY-Tax

