

## TeamMate Analytics 7.3 Release Notes - October 2020

---

### *TeamMate Analytics Release History*

Please note, we have revised our types of updates and how TeamMate Analytics versions are released:

- **Release** – releases contain significant functionality, are often architectural changes, or could be a language edition requiring several changes to files. These are full installations and will update existing versions. Examples of releases are: 1.0, 1.1, 2.0, 3.0.
- **Update** – updates combine defects or functionality that is considered critical on a scheduled basis (previously referred to as “Service Packs”). Updates may also be a minimal number of urgent defects or security vulnerabilities (previously referred to as “Hotfixes”). Examples of updates are: Release 1.2 Update 2 and Release 2.0 Update 1.

Version	Release Date	Release Notes
TeamMate Analytics 7.3	October 2020	<a href="#">TeamMate Analytics 7.3</a>
Releases prior to 7.3		<a href="#">TeamMate Support Site</a>

# TeamMate Analytics 7.3 - September 2020

The release of TeamMate Analytics 7.3 delivers the following new tools and enhancements:

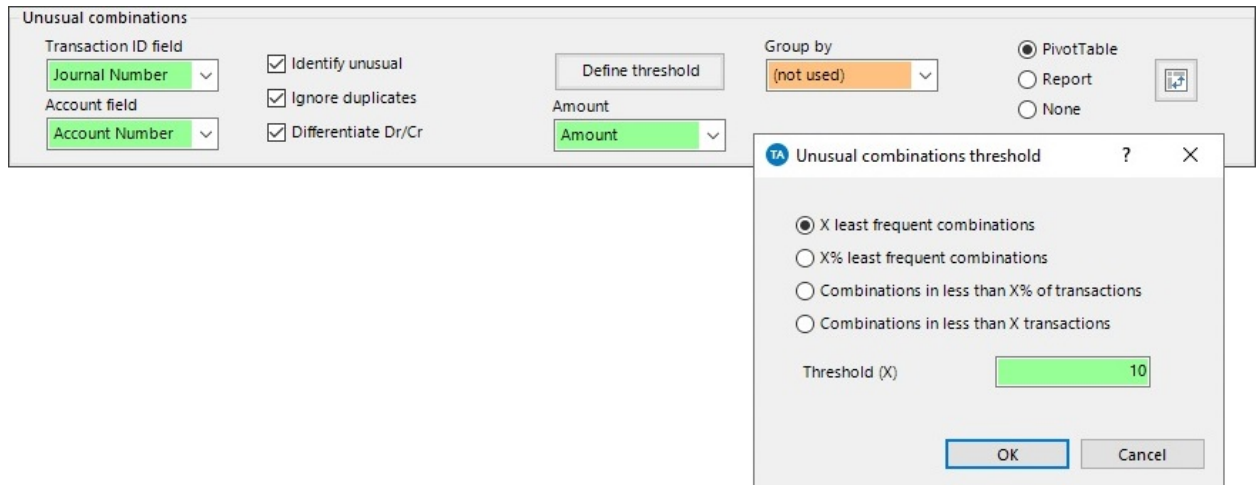
## 1. Append data in Expert Analyzer

You can now combine multiple data files together within Expert Analyzer, using the new Append tool. Maybe you have a data file for each quarter, or from each business unit or location, and want to combine them for analysis as a whole – that’s now possible. The Append tool can even account for columns in different orders, or that appear in only some of the data files, making combining them easy.

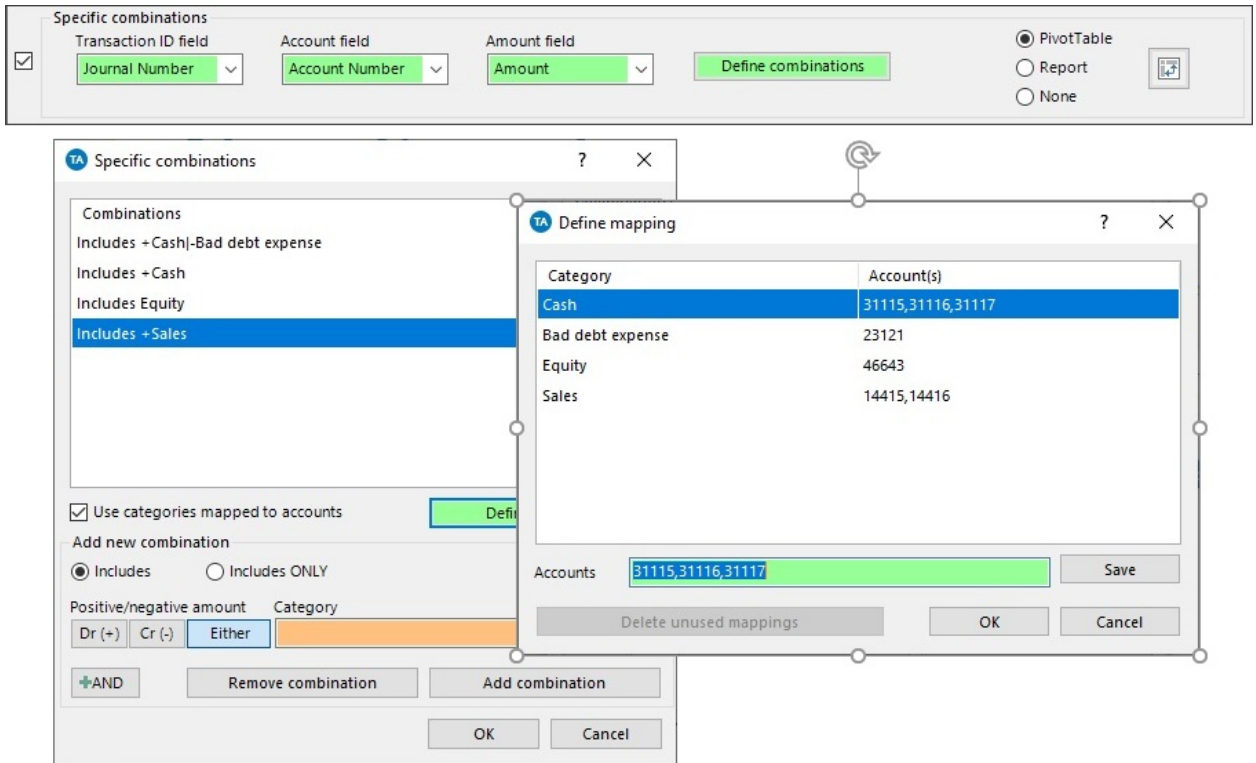
## 2. Process mining and analyzing the make-up of transactions

Two brand new tools have been added to Expert Analyzer to enable combinations of items (such as line items, journal entry lines, process steps, and so on) within a transaction to be analyzed. You can even use these tools to identify transactions that do not follow standard processing paths, with process mining techniques.

The *Unusual Combinations* tool looks for combinations of items that occur infrequently. For example, journal entries posting to an unusual combination of accounts; sales transactions that have gone through an unusual combination of processing steps; or an unusual combination of user access roles. This allows you to zero in on potentially high risk items by nature of their rarity.



The *Specific Combinations* tool applies your own rules to identify transactions that involve one or more items. For example, journal entries with a debit to fixed assets and a credit to sales; sales transactions that involve both a refund and a replacement shipment; or a toxic combination of user access roles. You know your business and the transactions you would not expect to see – the Specific Combinations allows you to find them in your data quickly and easily.



The applications of these two tools are almost limitless.

### 3. Evaluate formulas with more than 1 million rows of data

When using formulas in Expert Analyzer, they can now be applied even if your data is more than 1 million rows. This allows you to apply the calculation flexibility of your own Microsoft® Excel® functions to very large data files. The most commonly used mathematical and Excel functions are supported.

### 4. Create more flexible summaries in Expert Analyzer

The Advanced Summary tool on the TeamMate Analytics ribbon is now its own tool in Expert Analyzer. This allows you to create more flexible summaries of your data and analysis within your workflows.

### 5. Helping us to make TeamMate Analytics better for you

To help us better understand how TeamMate Analytics is used and to inform our product roadmap, this release adds **anonymous** activity logging.

This version comes in the form of full installs only and will upgrade existing TeamMate Analytics installations.

Please review the Caveats section at the bottom of this document.

## Enhancements

Reference	Area	Details
S-47202 S-47203 S-47352 S-47353	Expert Analyzer	Added Specific Combinations tool to Expert Analyzer to enable identification of transactions with specified combinations of items within them.
S-46862 S-46884	Expert Analyzer	Added Unusual Combinations tool to Expert Analyzer to enable identification of combinations of items within each transaction, and extraction of transactions where the combinations of items occur rarely.
S-46686 S-46687 S-46688 S-47180	Expert Analyzer	Added Append tool to Expert Analyzer to enable multiple tables or data files to be combined for analysis as a whole.
S-47056 S-47101 S-47468 S-47550 S-47453 S-47551 S-47611 S-47685	Expert Analyzer	Added the ability to evaluate formulas when using a database to analyze data in Expert Analyzer, for example when data exceeds 1 million rows in length. Supported functions included mathematical functions, whole-column functions like SUM, COUNT, MAX, MIN and AVERAGE, and selected Excel functions (ABS, RAND, ROUND, ROUNDUP, ROUNDDOWN, DAYS, TODAY, DAY, MONTH, YEAR, CONCATENATE, IF, AND, OR).
S-46689	Expert Analyzer	Added Advanced Summary tool to Expert Analyzer to enable creation of flexible PivotTable summaries without needing to create a calculated column.
S-47817 S-48028	Usage tracking	Added usage tracking, to collate anonymous TeamMate Analytics tool usage data.
S-47420	Licensing	Updated manual activation URLs due to changing website address.
n/a	Expert Analyzer Journals workflow	Updated Journals workflow to modify the method used for the 'journals with credits to cash' test, and add new 'journals to seldom used and suspense accounts' and 'journals with unusual account combinations' tests.
n/a	Test Library	Added new tests: <ul style="list-style-type: none"> <li>Journal entries with specific account combinations.</li> </ul>

Reference	Area	Details
		<ul style="list-style-type: none"> <li>• Unusual journal entry account combinations.</li> <li>• Review journals that credit revenue</li> </ul>
n/a	Standard dates	Updated standard holiday dates lists to cover 2015 to 2021.

## Defects

Reference	Area	Details
D-26860	Expert Analyzer	Resolved a defect where the field picker used in the Formulas tool would extend below the bottom of the form, making it difficult to select fields.
D-26757	Expert Analyzer	Resolved a defect where the Information test would not show line breaks when a workflow is run.
D-26329	Expert Analyzer	Resolved a defect where an incomplete message was shown when drilling down on Column Statistics when the source table was not present.
D-26730	Expert Analyzer	Resolved a defect where sometimes the workflow designer would open with a blank window.
D-26752	Import Wizard	Resolved a defect where the <i>check for missed characters</i> function in the template designer would not take account of fields that float with marker.
D-26806	Expert Analyzer	Resolved a defect where formulas that reference columns using the characters: comma (,), number sign (#), and single quotation mark (') would not be inserted into Excel.
D-27082	Installation	Resolved a defect where installing a new version without uninstalling the previous version could result in the Expert Analyzer and Test Library appearing blank.
D-27018	Expert Analyzer	Resolved a defect where after cancelling the running of a workflow, some steps would still be processed, rather than stopping immediately.

## Caveats

Issue	Resolution
N/A	

Complying with all applicable copyright laws is the responsibility of the user. Without limiting the rights under copyright, no part of this document may be reproduced, stored in or introduced into a retrieval system, or transmitted in any form or by any means (electronic, mechanical, photocopying, recording, or otherwise), or for any purpose, without the express written permission of Wolters Kluwer.

© 2020 TeamMate Licensing B.V. All rights reserved.