

TeamMate Analytics 8.0 - Update 2 Release Notes - December 2021

TeamMate Analytics Release History

Please note, we have revised our types of updates and how TeamMate Analytics versions are released:

- **Release** – releases contain significant functionality, are often architectural changes, or could be a language edition requiring several changes to files. These are full installations and will update existing versions. Examples of releases are: 1.0, 1.1, 2.0, 3.0.
- **Update** – updates combine defects or functionality that is considered critical on a scheduled basis (previously referred to as “Service Packs”). Updates may also be a minimal number of urgent defects or security vulnerabilities (previously referred to as “Hotfixes”). Examples of updates are: Release 1.2 Update 2 and Release 2.0 Update 1.

Version	Release Date	Release Notes
TeamMate Analytics 8.0 Update 2	December 2021	TeamMate Analytics 8.0 Update 2
TeamMate Analytics 8.0 Update 1	September 2021	TeamMate Analytics 8.0 Update 1
TeamMate Analytics 8.0	July 2021	TeamMate Analytics 8.0
Releases prior to 8.0		TeamMate Connect

TeamMate Analytics 8.0 - Update 2 - December 2021

The release of TeamMate Analytics 8.0 Update 2 contains resolutions for the following defects:

Defects

Reference	Area	Details
D-30173	General	Resolved a defect where in some cases when using International keyboard layouts, including Chinese and Japanese, tools launched from the TMA ribbon would not open correctly.
D-30283	Monetary Unit Sampling Monetary Unit Sampling – Expert Analyzer	Resolved a defect where the standalone and Expert Analyzer Monetary Unit Sampling estimation tools would not allow 0 to be entered as the expected error.

TeamMate Analytics 8.0 - Update 1 - September 2021

The release of TeamMate Analytics 8.0 Update 1 contains resolutions for the following defects:

Defects

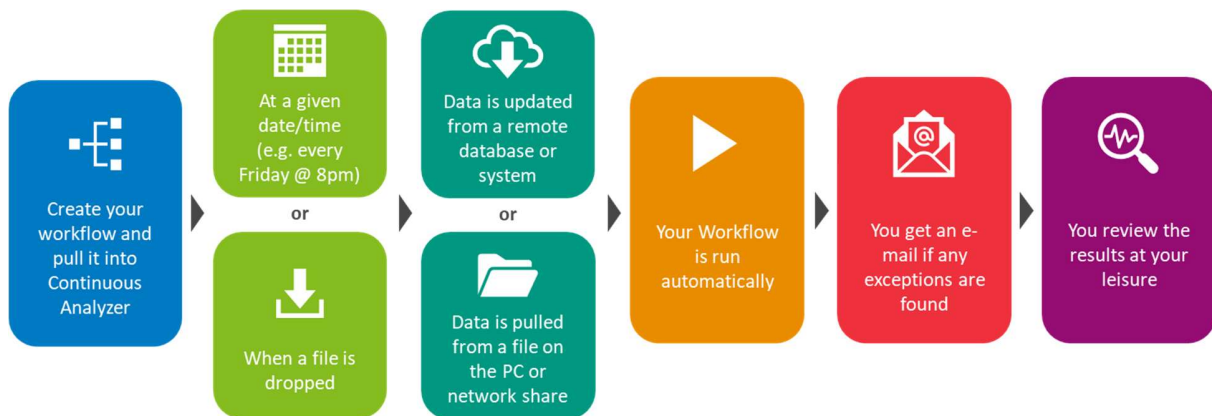
Reference	Area	Details
D-29665	Continuous Analyzer	Resolved a defect where a task would not run if the task name contained a leading or trailing space.
D-29651	Expert Analyzer - Aging	Resolved a defect where the resulting pivot table from the aging test would have an additional blank row.
D-29738	Expert Analyzer – Data File	Resolved a defect where the Expert Analyzer workflow would throw a warning message if the Data File options selected were Excel file and Other workbook, and the file was synced on a Microsoft OneDrive.
D-29653	Expert Analyzer – Data File	Resolved a defect where the Expert Analyzer - Data file rule to select First/Last file alphabetically would not work correctly.
D-29655	Expert Analyzer – Data File	Resolved a defect where Expert Analyzer workflow doesn't load correctly when the Worksheet rule is enabled, and the Workbook rule cannot find any matching workbook.

TeamMate Analytics 8.0 - July 2021

The release of TeamMate Analytics 8.0 delivers the following new tools and enhancements:

Continuous Analyzer enables continuous auditing

With the addition of Continuous Analyzer, Expert Analyzer can be run autonomously, for example at 8 p.m. every Friday, or when a data file is dropped into a folder. This enables continuous auditing and monitoring without the need for servers or special software. Continuous Analyzer will e-mail you when the analysis is complete, and lets you know if any exceptions were found.



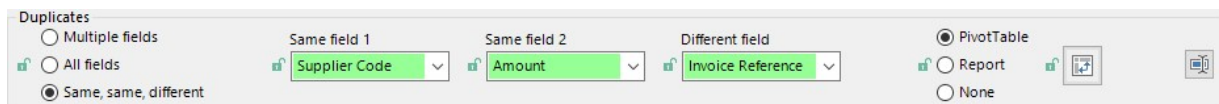
An overview of the Continuous Analyzer process

Alongside this come some additional updates that support Continuous Analyzer but can be used with Expert Analyzer as normal.

- Leveraging Power Query in Excel, source data can be retrieved from remote databases or systems and Expert Analyzer can automatically pull the latest updates when running the workflow.
- Source data files can now be automatically selected based on rules, for example the newest .csv file with a name containing “Payroll” in a given folder, and that folder can either be on your PC or a mapped network location.
- In your workflows, you can define which results constitute an exception and also receive e-mail notifications that are clearly displayed at the top of the Audit Log.

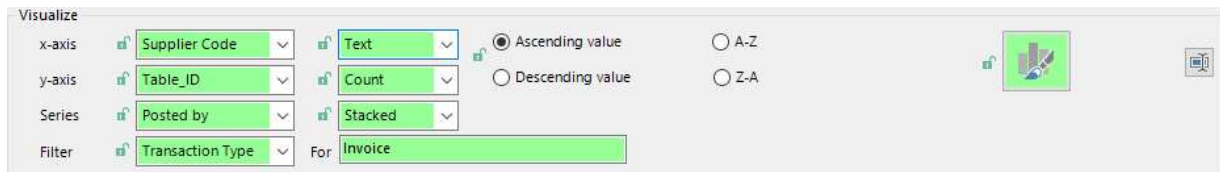
New capabilities for Expert Analyzer tests give more flexibility

Same, same, different capability has been added to the Duplicates test. This allows you to look for transactions where the values in one or two columns are the same but the values in another column are different. For example, you can search for invoices posted first to the wrong vendor and then the correct vendor by looking for transactions with the same invoice number and value but different vendors.



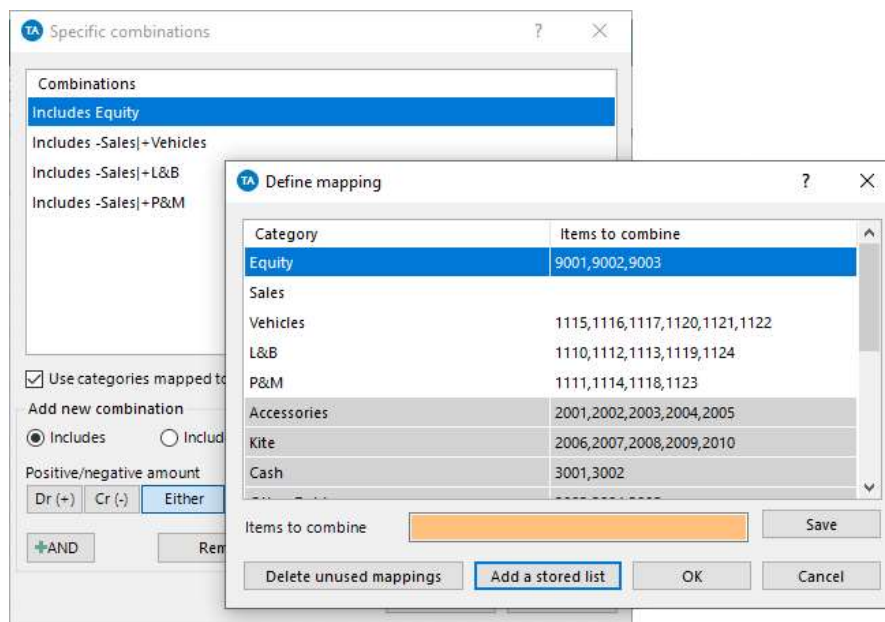
Same, same, different capability in Expert Analyzer Duplicates test

Visualize tests can now include the option for a filter field. This allows you to filter the data used by your chart to include only certain values. For example, you can now chart duplicate transactions by vendor without first using a Filter test to extract the duplicates. This makes creating charts and dashboards faster and easier and reduces processing time.



Filter in Expert Analyzer Visualize test

In Options, you can set up Mapping lists, for example, mapping general ledger accounts to their financial statement categories and import these from Excel. You can then use them in the Specific Combinations tool to easily apply your standard combination rules to different clients' account structures.



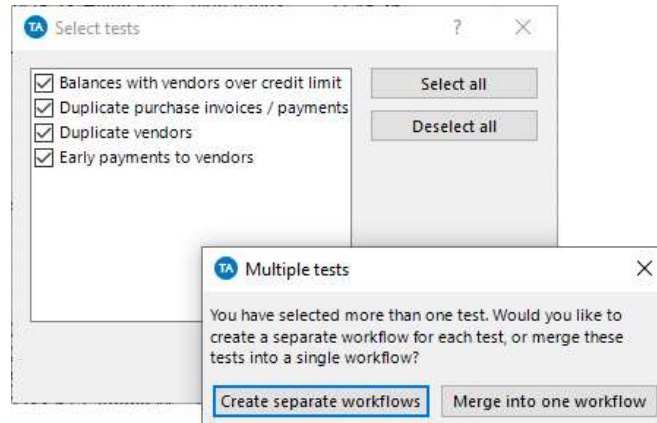
Add stored mapping lists to Specific Combinations

Audit assertions in the Test Library to pinpoint tests that meet your audit objectives

The audit assertions (existence, completeness, valuation, and more) that can be addressed by each test in the Test Library are now documented and are searchable. This enables you to easily find tests that allow you to apply data analytics in your audit.

Create your own Expert Analyzer workflows using multiple tests selected from the Test Library

After adding Test Library tests to your audit program, you can now merge their Expert Analyzer workflows together to be run together. This is a great starting point for creating your own custom workflows.



Merge Test Library workflows together using Expert Analyzer

Import less common data formats in the Import Wizard

Delimited text files with uncommon delimiter characters can now be easily imported with the Import Wizard. You can use any custom delimiter in the template designer.

New translations

Available language packs now include Danish, and the Help documentation and Test Library content are now available in French.

Enhancements

Reference	Area	Details
Various	Continuous Analyzer	Added Continuous Analyzer feature, allowing Expert Analyzer workflows to be scheduled to run automatically.
S-52186	Expert Analyzer	Added the ability to refresh queries in Excel data files when running a workflow.
S-52191 S-52192 S-53812	Expert Analyzer	Added “exceptions” – the ability to define and calculate the number of exceptions or red flags found when running a workflow.
S-53175 S-53177 S-53178 S-53179	Expert Analyzer	Added the ability to define rules to select the data file to use for analysis, such as the most recently added file in a folder, and the worksheet to analyze.
S-46690	Expert Analyzer – Visualize	Added the option to filter the data used in the visualization.
S-46861	Expert Analyzer – Group	Updated dependency logic with group test to allow more flexibility in selecting of values.
S-47232	Expert Analyzer	Added a message to warn users when changing PivotTable settings will break the link between them and the values selected in the test. This impacts Duplicates, Grouped Criteria Match, Split Transactions, Unusual Combinations, and Specific Combinations – tests where the settings automatically modify the PivotTable format.
S-48271	Highlight Changes	Added the option to show hyperlinks in the list of changes, allowing hyperlinks to be disabled. This is useful when there are many changes identified as hyperlinks can take a long time to generate.
S-49395 S-49396	Expert Analyzer – Duplicates	Added the ability to use “same, same, different” logic to find duplicated items.
S-49398	Monetary Unit Sampling	Added the starting dollar to audit log to enable manual recalculation of sample, if required.
S-49400	Import Wizard	Added custom delimiter option to Import Wizard to enable import of uncommon delimited formats.
S-49401	Manipulate text	Added tool to make cells that appear to be blank in Excel but are not blank (sometimes created by certain Excel formulas), actually blank.
S-49402	Test Library	Added the ability to merge multiple test workflows together into a single workflow.
S-50416	Options	Added support for creating mapping lists for use with the Specific Combinations Expert Analyzer test.

Reference	Area	Details
S-50413	Expert Analyzer – Specific Combinations	Added the ability to add mappings (for example, from trial balance account to financial statement category) from a mapping list in options.
S-50605	Expert Analyzer – Duplicates	Updated logic for “All fields” to only analyze enabled columns, excluding ID columns, and excluding columns created after the Duplicates test.
S-52160	Expert Analyzer	Updated logic to automatically translate non-customizable captions when language pack is changed.
S-53738	Test Library	Added audit assertions to the Test Library, including: <ul style="list-style-type: none"> • Adding the ability to add the assertions to the test in the test editor • Including Assertions as a new section in the Test Library • Enabling searching of only assertions using the search settings.
S-54264	Language packs	Added Danish (da-DK) language pack.
S-54265	Language packs	Added translations for the Online Help, Test Library and workflows to the French (fr-FR) language pack.

Defects

Reference	Area	Details
D-20427	Highlight Changes	Updated Highlight Changes tool to make sheet name non-case sensitive.
D-23059	Monetary Unit Sampling	Updated validation to prevent user entering expected error value or material error value as 0.
D-23130	Expert Analyzer – Over Amount	Resolved a defect where certain values entered in the amount box would be converted to a date.
D-24809	Sheet Checker	Resolved a defect where the Sheet Checker window would remain open but hidden after use.
D-25350	Expert Analyzer – Formula/Group	Updated validation to prevent formula tests using the same calculated column name as group test calculated columns.
D-26314 D-27126	Expert Analyzer	Updated field validation for locking entire tests to better handle complex workflows with multiple tables.
D-26363	Expert Analyzer – Data file	Resolved a defect where the Current Worksheet radio button was still visible when set to hidden.

Reference	Area	Details
D-26427	Expert Analyzer	Updated validation to prevent specifying the same name for both a data file field and a test's calculated column.
D-26868	Expert Analyzer – Join	Added a message to warn when the Join tool's output is unexpectedly greater than 1 million rows.
D-27037	Expert Analyzer – Data file	Resolved a defect where the current workbook would be closed if it was selected as the input for the Import Wizard.
D-27130	Expert Analyzer	Resolved a defect where the audit log would show the incorrect source data file name when Large File Mode was engaged.
D-27138	Expert Analyzer – Unusual Combinations	Resolved a defect where the selected Group by column in the output PivotTable settings for Unusual Combinations would not be retained when the Identify Unusual option is deselected then reselected.
D-27148	Expert Analyzer – Workflow Designer	Resolved a defect where pasting text directly on a test block on the canvas would prevent the workflow designer being closed.
D-28207	Import Wizard	Resolved a defect where the Import Wizard template designer would lose focus and appear unresponsive when modifying marker characters quickly.
D-28280	Highlight Changes	Added a message to warn when the number of changes reaches 1 million items and cannot be added to the list of changes.
D-28290	Expert Analyzer – Data file	Resolved a defect where in some cases the combo box for selection of Excel worksheets with Import Wizard was not shown.
D-28300	Manipulate text	Resolved a defect where cells that are blank following the use of manipulate text tool include a single quote ('), meaning they were not completely blank.
D-28524	Expert Analyzer	Resolved a defect where report output would fail if the calculated column used for the report contains a very long string.
D-28579	Import Wizard	Resolved a defect when importing Excel files using Import Wizard, it would always use the first worksheet in the file.
D-28752	Expert Analyzer – Append	Resolved a defect where an error message would be shown when the first appended table has only one record.
D-28753	Expert Analyzer – Aging	Resolved a defect where in certain scenarios the Aging test would causing an error message when creating the PivotTable.

Reference	Area	Details
D-28875	Expert Analyzer – Depreciation	Resolved a defect where items with 0% depreciation rate would show full depreciation for the year.
D-29113	Various	Updated tab orders to facilitate use with keyboard for the following tools: Stratification, Lead schedule, Outliers, Attributes sampling, Header and footer, Global find and replace.
D-29173	Expert Analyzer – Data file	Resolved a defect where in certain scenarios the Excel worksheet box would incorrectly validate red instead of green, preventing the workflow from running.
D-29284	Expert Analyzer – Specific Combinations	Resolved a defect where at very high display DPI settings (200%+), some of the buttons on the Specific Combinations settings form would not be visible.
S-53891	Expert Analyzer	Resolved a defect where an error message would be displayed in certain scenarios when running a workflow.

Caveats

Issue	Resolution
In some cases, when exporting a schedule to Excel, the TeamMate Analytics tab does not appear properly if Team Schedule open.	The workaround is to click the Close button after exporting a schedule to Excel and prior to opening the exported schedule in Excel.

Complying with all applicable copyright laws is the responsibility of the user. Without limiting the rights under copyright, no part of this document may be reproduced, stored in or introduced into a retrieval system, or transmitted in any form or by any means (electronic, mechanical, photocopying, recording, or otherwise), or for any purpose, without the express written permission of Wolters Kluwer.

© 2021 TeamMate Licensing B.V. All rights reserved.